

KENDALL HOWARD ®



SERVER RACKS, RACK SYSTEMS, NETWORK ENCLOSURES, TRAINING TABLES, SHELVES,
LAN STATIONS, AND WORKBENCHES – FROM MINNESOTA, U.S.A.

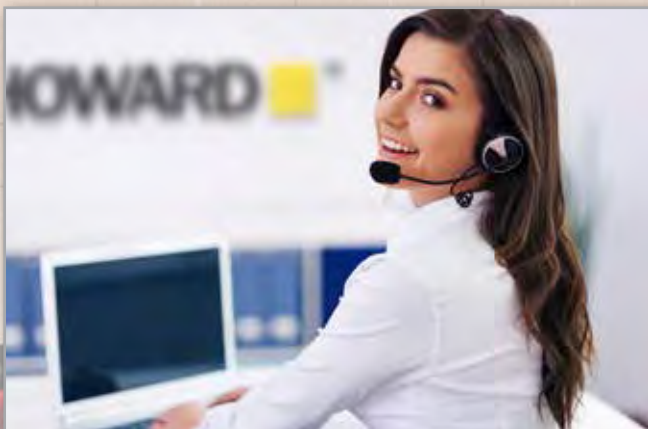
ABOUT US



KENDALL HOWARD is a leading designer and manufacturer of server racks, cabinets, rack shelves, rack accessories, and LAN Stations. We are known throughout the industry for our **high quality standards** and **attention to detail**. We choose to manufacture more functional, cost-effective, innovative products and solutions that keep up with evolving technology and compete with the flood of imported products. Some people wondered if it could be done. After all, racks and IT furniture are only a small component of your IT infrastructure. At Kendall Howard, we consistently prove that you actually can have the **best product**, with the **best customer service**, at the **best price!**

BEST PRODUCTS

How do we continue to produce high quality products? We do it here, that's how! By manufacturing products here in the United States (Chisago City, MN to be exact), we are able to **control the quality** of our products, and we have set the bar pretty high for ourselves. Together with our team of industry expert design engineers, our large fleet of top of the line automated machines, and our overall **passion for delivering perfection**, it's easy! Another benefit of manufacturing all products here in the U.S. is that we are able to control the status of our inventory, and turn raw materials into a finished product within a matter of days. We stock almost every product so we can **ship same day, every day**. For products built to order, we strive to maintain short lead times to get products from our machines to your location as soon as possible.



BEST CUSTOMER SERVICE

Our machines may be automated, but our service is not. We don't like searching through directories to speak with someone so why would we make you? **Call us** up and we'll **answer right away!** Our customer service team is available Monday through Friday from 7:00 a.m. to 5:30 p.m. CST. In a world of growing technology, Kendall Howard still believes in maintaining a **personal connection** with you.

BEST CUSTOMERS

That leads us to our **best feature** which we've saved for last...and really it's the first. **It's YOU!** Our customers are our number one priority and our focus. We face every challenge and request head on. If you're not happy, we're not happy so let us know how we can help. At Kendall Howard **the answer is yes...**
Now, what's the question?!



CONTENTS

WALL MOUNT RACKS/CABINETS

	Page
Modular Wall Mount Racks.....	6
V-Line Wall Mount Racks.....	7
Side Load Wall Mount Rack.....	8
V-Racks/Patch Panel Brackets.....	9
Open Frame Swing-Out Racks.....	10
Pivot Frame Wall Mount Racks.....	11
Security Wall Mount Cabinet.....	12
Corner Wall Mount Cabinet.....	13
LINIER® Fixed Wall Mount Cabinets.....	14-15
LINIER® Swing-Out Wall Mount Cabinets.....	16-17
Wall Mount CPU Shelves.....	18
Adjustable CPU Holder.....	19



FULL SIZE SERVER RACKS/CABINETS

	Page
2-Post Eco Rack.....	22
Conversion Kits.....	23
2-Post Cable Cove Rack.....	24
Knockdown 4-Post Open Frame Rack.....	25
Portable Racks.....	26
Compact Series SOHO Server Cabinets.....	27
LINIER® Full Size Server Cabinets.....	28-33
24" Depth.....	30-31
36" Depth.....	32-33



RACK ACCESSORIES

	Page
Flanged Lacing Bars	36
Cable Lacing Shelf	37
Flat Cable Lacing Panels/Cable Routing Blanks	38
D-Ring Cable Management Kit/Managed Cable Minder	39
Tool-less D-Ring Cable Managers	40
Finger Duct/Slotted Routing Cable Managers	41
Universal Wire Minder	42
Spacer Blanks/Filler Panels	43
Cantilever Rack Shelves	44-45
Centerline Shelves	46
2-Piece Telco Rack Shelf	47
4-Point Adjustable Shelves	48
Sliding Rack Shelves/20" Fixed Rack Shelf	49
Keyboard Trays	50-51
Rackmount Drawers	52
Fans	53
LINIER® Vertical Rail Kits	54
LINIER® Caster Base	55
Rack Screws	56
Cage Nuts	57
Mounting Kits/Hook and Loop Cable Ties	58
Rack Helper/LINIER® Wall Mount Combination Lock	59



PC SECURITY

	Page
PC/LCD Security Stand	62
Thin Client/LCD Wall Mount	63
DVR Security Lock Boxes	64
POS Payment Device Stand	65



TECHNICAL FURNITURE

	Page
Advanced Classroom Training Tables	68-69
Performance Series® LAN Stations/Workbenches	70-71
Performance Series® & Performance Plus® Accessories	72-73
Performance Plus® LAN Stations/Workbenches	74-75



INTRODUCTION

Wall Mount Racks & Cabinets

Space at a premium? Why not install your network on the wall? We have numerous wall mount racking solutions to choose from. From open frame to secure corner mount solutions, you are sure to find the perfect solution at the right price!



Open Frame Wall Mount Racks

Modular Wall Mount Racks	6
V-Line Wall Mount Racks	7
Side Load Wall Mount Rack	8
V-Racks/Patch Panel Brackets	9
Open Frame Swing-Out Racks	10
Pivot Frame Wall Mount Racks	11



Wall Mount Cabinets/Enclosures

Security Wall Mount Cabinet	12
Corner Wall Mount Cabinet	13



LINIER® Fixed & Swing-Out Cabinets

LINIER® Fixed Wall Mount Cabinets	14-15
LINIER® Swing-Out Wall Mount Cabinets	16-17



Wall Mount CPU Holders/Shelves

Wall Mount CPU Shelves	18
Adjustable CPU Holder	19

MODULAR WALL MOUNT RACKS



MODULAR WALL MOUNT RACKS

Kendall Howard's Modular Wall Mount Rack was the first of its kind! It did not take long for this rack to become the standard that all wall mount racks are measured against. The two-piece design offers unlimited flexibility. This innovative design can adjust to any width so it can house either 19" EIA or 23" EIA rackmount equipment. The generous 18" depth has enough room for cables, switches, routers, and so much more. Whether you are mounting it under a desk, on a wall, or to the ceiling, the Modular Wall Mount Rack is perfect for any application.

FEATURES

- 18" maximum depth
- 350 lb. weight capacity
- EIA 310-D compliant
- Made in the USA
- Limited Lifetime Warranty

Two-Piece Design - The unique design allows you to choose the width. With equipment widths continuing to change, the two-piece wall rack can adapt to suit your needs.

Heavy Duty - Pure ingenuity and heavy gauge steel construction give this wall mount rack its impressive 350 lb. weight capacity.

Gangable - This modular wall mount rack can grow with your network. If you need more rack space, just gang two units together vertically.

Standard Tapped Rails - The pre-tapped mounting rails can be utilized to install network and other rackmount equipment with the use of 10-32 rack screws.

Easy to Install - With the use of the included wall mount template, installation takes less than five minutes!

8U

12U

COMPANION
PRODUCT

RACK SCREWS

... SEE PAGE 56



	8U	12U
Product Name	Modular Wall Mount Rack	Modular Wall Mount Rack
Width	Adjustable	Adjustable
Depth	18.13"	18.13"
Height	14.25"	21.25"
Shipping Method	Small Package	Small Package
Color	Black Powder Coated Finish	Black Powder Coated Finish
Warranty	Limited Lifetime Warranty	Limited Lifetime Warranty
SKU	1915-3-001-08	1915-3-001-12

V-LINE WALL MOUNT RACKS



One side 10-32 tapped rails



One side universal cage nut style rails



12U



16U



21U

V-LINE WALL MOUNT RACKS

The Kendall Howard V-Line Wall Mount Racks are the perfect entry level solution for IT installers, musicians, audio/visual technicians, and anyone else in the telecom industry. When a simple open frame wall mount rack is needed, the Kendall Howard V-Line Wall Mount Racks are a great option.

FEATURES

- 12" or 18" maximum mounting depth
- Reversible rails - one side cage nut, one side 10-32 tapped
- Self-squaring design
- 19" EIA 310-D compliant
- Made in the USA
- Limited Lifetime Warranty

Knockdown Design - The bolt together assembly has a self-squaring design to make it incredibly easy to assemble and install.

Choose Your Rail Style - The U shaped rail channels feature two different mounting styles. One side features 10-32 tapped mounting holes, and the other has universal cage nut mounting capabilities.

Quality Wall Rack - The simplistic design of the V-Line Wall Mount Rack may not look it, but its 300 lb. weight capacity makes it one of the strongest wall mount solutions out there.

COMPANION
PRODUCT

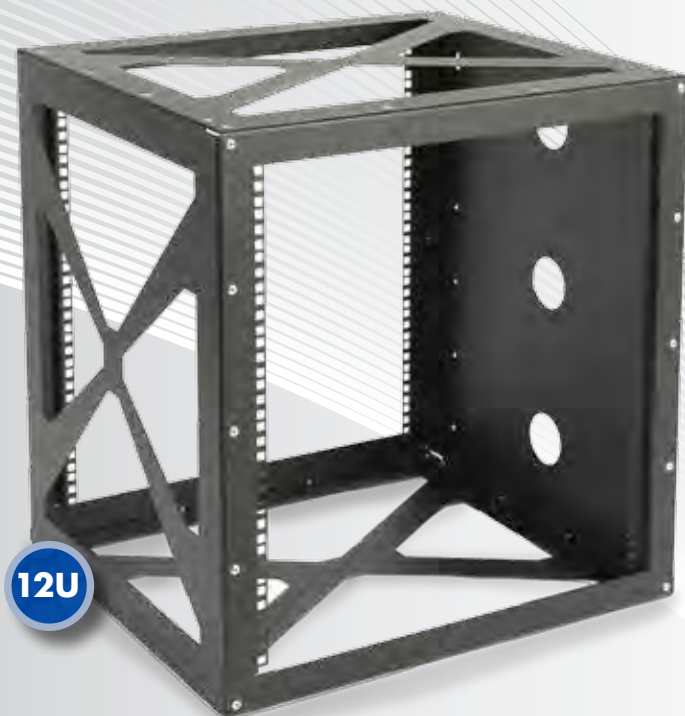
WALL MOUNT
HARDWARE KIT

... SEE PAGE 58



Product Name	12U 12" V-Line Wall Mount Rack	16U 12" V-Line Wall Mount Rack	21U 12" V-Line Wall Mount Rack	12U 18" V-Line Wall Mount Rack	16U 18" V-Line Wall Mount Rack	21U 18" V-Line Wall Mount Rack
Width	21.5"	21.5"	21.5"	21.5"	21.5"	21.5"
Depth	12"	12"	12"	18"	18"	18"
Height	24.13"	31.13"	39.88"	24.13"	31.13"	39.88"
Shipping Method	Small Package	Small Package	Small Package	Small Package	Small Package	Small Package
Color	Black Powder Coated Finish	Black Powder Coated Finish	Black Powder Coated Finish	Black Powder Coated Finish	Black Powder Coated Finish	Black Powder Coated Finish
Warranty	Limited Lifetime Warranty	Limited Lifetime Warranty	Limited Lifetime Warranty	Limited Lifetime Warranty	Limited Lifetime Warranty	Limited Lifetime Warranty
SKU	1915-3-300-12	1915-3-300-16	1915-3-300-21	1915-3-301-12	1915-3-301-16	1915-3-301-21

SIDE LOAD WALL MOUNT RACK



SIDE LOAD WALL MOUNT RACK

The Kendall Howard Side Load Wall Mount Rack is an open frame rack with a twist...literally. The rack mounts sideways allowing you to install equipment from side to side. This innovative concept not only allows you to install deeper equipment than most other wall mount racks, but you also have clear and easy access to the front and rear of the devices. With a weight capacity of up to 350 lbs., this side loading wall rack is a great solution for servers, battery backups, and other heavy rackmount components.

FEATURES

- 20" fixed mounting depth
- 350 lb. weight capacity
- 19" EIA 310-D compliant
- Made in the USA
- Limited Lifetime Warranty

Space Saving Design - The Side Load Wall Mount Rack is suitable for spaces where a full size cabinet will not fit or when it's necessary to hang larger, deeper components on the wall. The Side Load Wall Mount Rack gives some of the same benefits you get from a 4-Post rack or cabinet in a much smaller footprint. The low profile design is only 21 inches off the wall, making it a true space saver.

Equipment Access - Easily access the front and back of your network equipment without having to twist, pivot or swing-out the rack. This open design provides installers unlimited access to equipment from just about any angle.

Strength and Durability - The heavy gauge steel construction and textured powder coat finish provide a solid, reliable wall mount racking solution.

Front and Rear Rails - The fixed set of front and rear (which are really left and right) cage nut style rails provide a 20" mounting depth for equipment that requires 4-point mounting.

COMPANION PRODUCTS

RACK SCREWS

... SEE PAGE 56

CAGE NUTS

... SEE PAGE 57

CANTILEVER RACK SHELVES

... SEE PAGES 44-45



Product Name	12U Side Load Wall Mount Rack
Width	20.15"
Depth	22.18"
Height	24.27"
Shipping Method	Small Package
Color	Black Powder Coated Finish
Warranty	Limited Lifetime Warranty
SKU	1915-3-200-12

V-RACKS/PATCH PANEL BRACKETS



4U

V-RACKS

Kendall Howard V-Racks allow you to vertically or horizontally mount servers or other rackmountable devices regardless of depth. Designed to mount on a wall or under a desk, the Kendall Howard V-Rack provides users more versatility on where they can place their products while saving them space.

FEATURES

- Low profile design
- Universal cage nut style rails
- No depth restrictions
- 150 lb. weight capacity
- Made in the USA
- Limited Lifetime Warranty

Low Profile Design - The V-Rack sticks out just a few inches from the wall. Mounting equipment like this is perfect for applications where space is at a premium.

No Depth Restrictions - The open design allows you to install servers, switches, and other network equipment regardless of depth.

Multiple Uses - Designed to mount to the wall, under a desk or to any surface to provide a 19" EIA compliant rail system. If you need a 4-point mounting system, simply mount two V-Racks back to back.

Product Name	2U V-Rack	3U V-Rack	4U V-Rack
Width	19.25"	19.25"	19.25"
Depth	3.89"	5.64"	7.39"
Height	6"	6"	6"
SKU	1916-2-100-2	1916-2-100-3	1916-2-100-4



4U

PATCH PANEL BRACKETS

The Kendall Howard Patch Panel Bracket makes mounting patch panels and other shallow equipment simple and easy. The unique hinged design allows installed equipment to swing to the left or right 180 degrees for convenient access to the back. These hinged wall mount systems are a fantastic alternative to larger, more expensive solutions that end up wasting space.

FEATURES

- 6" usable depth
- 180 degree swing-out
- 10-32 tapped rails
- 19" EIA 310-D compliant
- Made in the USA
- Limited Lifetime Warranty

Low Cost Wall Mount Solution - The hinged design delivers the functionality of a swing-out rack without the added cost. Perfect for small business or home office applications.

Numerous Cable Tie Points - The Patch Panel Brackets are packed with built-in cable tie downs and access holes, ensuring your installation is neat, organized, and ready for action.

Easy to Use - Once the bracket is mounted to the wall, simply mount the device to the hinged side of the bracket, swing it open, and terminate the cables. When completed, close the bracket and secure to the other side of the bracket.

Product Name	1U Patch Panel Bracket	2U Patch Panel Bracket	4U Patch Panel Bracket	6U Patch Panel Bracket
Width	19.25"	19.25"	19.25"	19.25"
Depth	6"	6"	6"	6"
Height	1.75"	3.5"	7"	10.5"
SKU	1916-3-200-01	1916-3-200-02	1916-3-200-04	1916-3-200-06

OPEN FRAME SWING-OUT RACKS



12U



18U

COMPANION
PRODUCT

RACK SCREWS
... SEE PAGE 56



PHANTOM CLASS® OPEN FRAME SWING-OUT RACKS

The Phantom Class® Open Frame Swing-Out Rack is truly in a class of its own. The unrivaled quality allows you to install rackmount equipment up off the floor, and it can easily support up to 150 lbs. The 90 degree swing-out provides installers the access they need to install and manage patch panels, routers, hubs, switches, cabling, and other networking devices.

FEATURES

- One set of 10-32 tapped rails
- 150 lb. weight capacity
- 20" usable mounting depth
- 19" EIA-310-D compliant
- Made in the USA
- Limited Lifetime Warranty

90 Degree Swing-Out - Pivoting rackmount frame swings out 90 degrees to easily access the rear of installed network equipment. Integrated positive stop prevents the gate from being opened more than 90 degrees to avoid causing damage or stress to cabling and connection points. A simple latching mechanism securely holds the swing gate in the closed position when finished.

Easy to Assemble - Knockdown design reduces shipping charges and assembles in a snap. With just a few steps, the rack is easy to assemble, and you can mount directly to your wall studs.

Reversible Mounting - Swing gate rack can be mounted to allow the rack to swing-out to the left or to the right to suit your particular install.

Numerous Cable Lacing Points - Both the front and rear of the wall rack feature oblong cut outs for securing cable bundles. Simply use your preferred cable ties or hook and loop straps.

Open Back Design - Backless design allows the rack to be installed over existing equipment such as network or electrical conduit, wall mounted equipment, and more. Perfect for upgrading a network that already is in use because you don't have to disconnect cables and spend time re-terminating. Just feed the device through the top, back or sides and mount into place.

	12U	18U
Product Name	Phantom Class® Open Frame Swing-Out Rack	Phantom Class® Open Frame Swing-Out Rack
Width	21.09"	21.09"
Depth	22.12"	22.12"
Height	31.24"	41.74"
Shipping Method	Small Package	Small Package
Color	Black Powder Coated Finish	Black Powder Coated Finish
Warranty	Limited Lifetime Warranty	Limited Lifetime Warranty
SKU	1915-3-800-12	1915-3-800-18

PIVOT FRAME WALL MOUNT RACKS

WALL MOUNT RACKS/CABINETS

FULLSIZE SERVER RACKS/CABINETS

RACK ACCESSORIES

PC SECURITY

TECHNICAL FURNITURE



Open position



Closed position

PIVOT FRAME WALL MOUNT RACK COVER

The Pivot Frame Wall Mount Rack Cover helps prevent dust and debris from settling on equipment. When creating a larger racking solution and mounting multiple Pivot Frame Wall Mount Racks above and below each other, use the cover to separate each rack.

SKU 1915-3-401-00



PIVOT FRAME STATIONARY RACKMOUNT BRACKETS

Mount the Pivot Frame Stationary Rackmount Brackets to the top or bottom of the Pivot Frame Wall Mount Rack when you want to mount equipment that you do not want to pivot.

SKU 1915-3-402-00



PIVOT FRAME WALL MOUNT RACKS

The Pivot Frame Wall Mount Rack makes network equipment installation and maintenance easy for installers. Its pivot feature allows the rackmount frame to swing down and stop at 90 degrees, giving installers full access to the rear of equipment. Even when in the open/down position, the rack can withstand the force of punching down multiple connections — a feature especially helpful when installing patch panels. The Pivot Frame Wall Mount Rack is built with a 12" depth making it suitable for network and telecom devices such as patch panels, network switches, routers, and more. Its modular design allows you to mount multiple racks above and below each other creating a larger rack solution.

FEATURES

- Includes 12 10-32 rack screws
- 10-32 tapped rails
- 12" usable mounting depth
- 90 degree swing down
- 75 lb. weight capacity
- 19" EIA 310-D compliant
- Made in the USA
- Limited Lifetime Warranty

90 Degree Swing Down - Pivoting rackmount frame swings down to allow easy access to the rear of installed network equipment. An integrated positive stop prevents the frame from being opened more than 90 degrees to avoid causing damage or strain to your equipment and connections. A latching mechanism securely holds the frame in a closed position.

Open Frame Design - Open frame design allows the rack to be installed over existing equipment without having to remove and re-terminate network cables. Its open frame design and the laser knockouts on both sides of the rack also provide numerous locations for cable routing into the rack.

Cable Management - The rear lacing panels on either side of the rack allow for excess cabling to be secured with the use of Hook and Loop Cable Ties.

Easy to Install - Rack ships completely assembled making installation easy. Simply remove the rack from the packaging, mount to the wall with mounting hardware (sold separately), and install your components with the included 10-32 rack screws.

Heavy Duty - The heavy duty steel construction makes the rack capable of supporting up to 75 lbs. of network equipment in both the open and closed position.

	4U	8U
Product Name	Pivot Frame Wall Mount Rack	Pivot Frame Wall Mount Rack
Width	21.90"	21.90"
Depth	12.25"	12.25"
Height	8.41"	15.41"
Shipping Method	Small Package	Small Package
Color	Black Powder Coated Finish	Black Powder Coated Finish
Warranty	Limited Lifetime Warranty	Limited Lifetime Warranty
SKU	1915-3-400-04	1915-3-400-08

SECURITY WALL MOUNT CABINET



8U

COMPANION PRODUCTS

RACK SCREWS

... SEE PAGE 56

CAGE NUTS

... SEE PAGE 57

CANTILEVER RACK SHELVES

... SEE PAGES 44-45

FANS

... SEE PAGE 53



SECURITY WALL MOUNT CABINET

The Kendall Howard Security Wall Mount Cabinet is a secure, professional looking solution for housing your network, electrical, and peripheral equipment. Many times, small offices or remote locations require expensive data and network equipment to be installed in an open environment. This can lead to problems with employees, customers or others tampering with or destroying devices. With this wall mount enclosure, you can securely mount all of your equipment and eliminate the risk of unauthorized use.

FEATURES

- 250 lb. weight capacity
- Tool-less adjustable cage nut style rails
- 20" usable depth
- 19" EIA 310-D compliant
- Made in the USA
- Limited Lifetime Warranty

Solid, Secure Enclosure - The durable steel construction features solid sides and a locking front door to keep installed equipment safe.

Click-N-Drop Rails - The included set of cage nut style rails can be adjusted without having to remove nuts and bolts. The Click-N-Drop design only needs to be set and snapped into place. Once secured, install your rackmount equipment with the use of rack screws and cage nuts.

Smoked Acrylic Front Door - The removable locking front door features a smoked gray acrylic window for easy viewing and monitoring of installed equipment.

Open Back Design - The open back design allows already terminated equipment such as patch panels and switches to be fed through the back of the cabinet, saving your installers hours of time re-terminating cables. The large open space is also perfect for applications with an immense amount of cabling which can be fed through the wall directly into the cabinet.

Numerous Cable Knockouts - Multiple laser knockouts are featured on the top and bottom of the enclosure, providing a variety of cable entry points.

Cooling/Ventilation - Optional fan kits can be installed in the top and/or bottom of the security cabinet to help keep equipment from overheating.

	8U
Product Name	Security Wall Mount Cabinet
Width	22.22"
Depth	20.65"
Height	17.23"
Shipping Method	Small Package
Color	Black Powder Coated Finish
Warranty	Limited Lifetime Warranty
SKU	1915-3-100-08



CORNER WALL MOUNT CABINET



12U

PHANTOM CLASS® CORNER WALL MOUNT CABINET

The Kendall Howard Phantom Class® Corner Wall Mount Cabinet is truly unlike any other rack on the market. It is the first and only EIA compliant wall mounted equipment rack that can mount in the corner of the room. The Phantom Class® Corner Wall Mount Cabinet is so innovative with a one-of-a-kind design that we have been awarded a patent for this product. Imagine the ability to mount equipment in schoolrooms, offices or utility rooms without taking up valuable wall space. Saving space means saving time and money.

FEATURES

- 17.5" usable depth, 27" actual depth
- Adjustable 10-32 tapped rails
- Smoked acrylic front door
- 650 lb. load capacity
- 19" EIA 310-D compliant
- Made in the USA
- Limited Lifetime Warranty



Front View



Back View



Side View



Top/Bottom View

Space Saving Design - Geometrically merges itself into the environment, saving space, opening up walkways, and improving the overall flow and footprint of the room.

Multi-Angle Equipment Monitoring - Because of its ability to mount in the corner, its sleek design allows your equipment to be monitored from virtually anywhere in the room.

Easy One-Person Install Mounting System - We understand that every installation is different and brings with it its own challenges. It's because of this that we have included a brilliantly engineered mounting system that allows the cabinet to be installed by just one person while still maintaining a 650 lb. load capacity.

Removable Locking Access Panels - Complement the already user-friendly design by allowing access to the healthy 18" mounting depth for maintenance or changes.

Reversible Lift-Off Door - Simple lift-off capability can be left or right mounted for a universal solution that can be tailored to each user's specific needs.

Open Back Design - As an added feature, we have created an open back design allowing cables to be easily fed through the wall, terminated, and managed prior to hanging the cabinet.

Top and Bottom Laser Knockouts - To top it all off, we have added laser knockouts for fans and conduit in the top and bottom panels making it a breeze to configure for any application or environment.



	12U
Product Name	Corner Wall Mount Cabinet
Width	27.18"
Depth	27.18"
Height	22.5"
Shipping Method	LTL Freight
Color	Black Powder Coated Finish
Warranty	Limited Lifetime Warranty
SKU	1915-3-700-12

LINIER® FIXED WALL MOUNT CABINETS



LINIER® FIXED WALL MOUNT CABINETS

If you are looking for the right wall mount rack at the right price, the LINIER® brand is the solution for you. The LINIER® Fixed Wall Mount Cabinets provide stability and durability for your valuable network equipment. Its feature rich design gives you a universal enclosure, guaranteed to function for a variety of applications. Glass, solid, and vented doors are available for all LINIER® Fixed Wall Mount Cabinets. The glass door allows you to monitor your network system; the solid door helps secure and conceal your network equipment while preventing dust and debris from settling on your equipment; and the vented door provides air flow and ventilation for your system.

FEATURES

- Includes one locking door
- Locking side panels
- 250 lb. weight capacity
- One set of cage nut style mounting rails
- Mounting depth: 22.5"
- 19" EIA 310-D compliant
- Made in the USA
- 5-Year Limited Warranty

LINIER®

COMPANION PRODUCTS

CASTER BASE

... SEE PAGE 55



RAIL KITS

... SEE PAGE 54



WALL MOUNT COMBINATION LOCK

... SEE PAGE 59



Cost-Effective Design - Innovative engineering and outside-of-the-box thinking paved the way for this durable, American-made yet economical wall mount enclosure.

Numerous Laser Knockouts - Strategically placed laser knockouts provide a plethora of locations to feed copper or fiber optic cabling into the cabinet, or to install an optional fan kit for temperature control.

Adjustable Rails - The included set of cage nut style rails fully adjust in 1" increments to accommodate the various depths of equipment on the market. Additional rails are available for devices that require 4-point mounting.

Removable Side Panels - Easy to remove side panels provide more access for growing or changing cabling schemes, as well as offer viewing and accessibility to your equipment.

Locking Doors and Side Panels - The locking feature provides additional security for all three access points to keep your valuable rackmounted equipment safe from unauthorized use.

Reversible Door - All door styles are reversible to accommodate your particular installation.



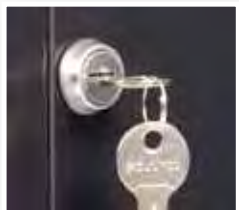
6U



9U



12U



Locks secure your equipment.



One set of adjustable cage nut style rails.



Removable/lockable side panels give easy access to your equipment.



Fan cut outs on top and bottom allow you to easily install optional fans.



Top and bottom removable cable slots for added versatility.

CHOOSE FROM THREE DOOR TYPES



Glass Door



Solid Door



Vented Door

Product Name	6U LINIER® Fixed Wall Mount Cabinet	9U LINIER® Fixed Wall Mount Cabinet	12U LINIER® Fixed Wall Mount Cabinet	15U LINIER® Fixed Wall Mount Cabinet	18U LINIER® Fixed Wall Mount Cabinet	22U LINIER® Fixed Wall Mount Cabinet
Width	23.5"	23.5"	23.5"	23.5"	23.5"	23.5"
Depth	22.86"	22.86"	22.86"	22.86"	22.86"	22.86"
Height	13.63"	18.88"	24.13"	29.38"	34.63"	41.63"
SKU - Glass Door	3140-3-001-06	3140-3-001-09	3140-3-001-12	3140-3-001-15	3140-3-001-18	3140-3-001-22
SKU - Solid Door	3141-3-001-06	3141-3-001-09	3141-3-001-12	3141-3-001-15	3141-3-001-18	3141-3-001-22
SKU - Vented Door	3142-3-001-06	3142-3-001-09	3142-3-001-12	3142-3-001-15	3142-3-001-18	3142-3-001-22



15U



18U



22U

LINIER® SWING-OUT WALL MOUNT CABINETS



Side panels not shown

COMPANION PRODUCT

RAIL KITS

... SEE PAGE 54



WALL MOUNT COMBINATION LOCK

... SEE PAGE 59



LINIER® SWING-OUT WALL MOUNT CABINETS

The LINIER® Swing-Out Wall Mount Cabinets are designed to solve the everyday problems technicians have while installing and managing the immense amount of cabling that is all-too-common with datacom and telecom equipment. Glass, solid, and vented doors are available for all LINIER® Swing-Out Wall Mount Cabinets. The glass door allows you to monitor your network system; the solid door helps secure and conceal your network equipment while preventing dust and debris from settling on your equipment; and the vented door provides air flow and ventilation for your system. Don't work around the rack... get a rack that works around you!

FEATURES

- Includes one locking door
- Locking side panels
- 150 lb. weight capacity
- One set of cage nut style mounting rails
- 90 degree swing-out
- Mounting depth: 22.5"
- 19" EIA 310-D compliant
- Made in the USA
- 5-Year Limited Warranty

LINIER®

Economical Design - Smartly engineered to include all the features you would expect, at a competitive price point, and with the quality that comes with American manufacturing.

90-Degree Swing-Out - Lockable enclosure can be swung out 90 degrees from the back frame allowing access to the rear of installed equipment. This capability provides additional space and accessibility for terminating, installing, and managing cables.

Numerous Laser Knockouts - Strategically placed laser knockouts provide a plethora of locations to feed copper or fiber optic cabling into the cabinet, or to install an optional fan kit for temperature control.

Adjustable Rails - The included set of cage nut style rails fully adjust in 1" increments to accommodate the various depths of equipment on the market. Additional rails are available for devices that require 4-point mounting.

Removable Side Panels - Easy to remove side panels provide more access for growing or changing cabling schemes, as well as offer viewing and accessibility to your equipment.

Reversible Door - All door styles are reversible to accommodate your particular installation.

6U

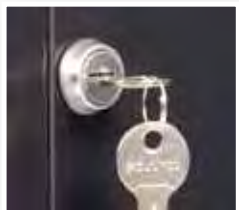


9U



12U





Locks secure your equipment.



One set of adjustable cage nut style rails.



Removable/lockable side panels give easy access to your equipment.



Fan cut outs on top and bottom allow you to easily install optional fans.



Top and bottom removable cable slots for added versatility.

CHOOSE FROM THREE DOOR TYPES



Glass Door



Solid Door



Vented Door

Product Name	6U LINIER® Swing-Out Wall Mount Cabinet	9U LINIER® Swing-Out Wall Mount Cabinet	12U LINIER® Swing-Out Wall Mount Cabinet	15U LINIER® Swing-Out Wall Mount Cabinet	18U LINIER® Swing-Out Wall Mount Cabinet	22U LINIER® Swing-Out Wall Mount Cabinet
Width	23.5"	23.5"	23.5"	23.5"	23.5"	23.5"
Depth	25.99"	25.99"	25.99"	25.99"	25.99"	25.99"
Height	13.63"	18.88"	24.13"	29.38"	34.63"	41.63"
SKU - Glass Door	3130-3-001-06	3130-3-001-09	3130-3-001-12	3130-3-001-15	3130-3-001-18	3130-3-001-22
SKU - Solid Door	3131-3-001-06	3131-3-001-09	3131-3-001-12	3131-3-001-15	3131-3-001-18	3131-3-001-22
SKU - Vented Door	3132-3-001-06	3132-3-001-09	3132-3-001-12	3132-3-001-15	3132-3-001-18	3132-3-001-22



15U



18U



22U

WALL MOUNT CPU SHELVES

DESKTOP



SFF



WALL MOUNT CPU SHELVES

The Kendall Howard Wall Mount CPU Brackets are designed to safely store tower computers out of the way by mounting them to the wall or the side of a desk. Desktop computers and PCs that sit on a desk take up valuable workspace, look cluttered and unorganized, and run the risk of being damaged due to soda or coffee spills. But the floor is no place for it either. Computers located on the floor are in continual danger of being jostled and kicked, not to mention the difficulty in accessing the drives, ports, and card readers. By installing this Wall Mount CPU Bracket, you can create a more functional and organized workspace while also better protecting your PC from damage.

FEATURES

- Heavy duty
- 75 lb. weight capacity
- 50" hook and loop strap included
- Mounts in minutes to any wall or desk
- Made in the USA
- Limited Lifetime Warranty

Universal Design - The heavy duty welded design provides a dependable mounting solution for most CPU's and tower computers.

Included Hook and Loop Strap - The CPU bracket includes a large hook and loop strap that can be fed through slots on the side of the bracket for added support.

Easy to Install - The CPU bracket ships fully assembled. To install, simply secure hardware through the 16" on center mounting holes and it is ready for use.

Product Name	Desktop Wall Mount CPU Bracket	SFF Wall Mount CPU Bracket
Width	18.04"	18.04"
Depth	7.9"	4.25"
Height	9.9"	7.9"
Shipping Method	Small Package	Small Package
Color	Black Powder Coated Finish	Black Powder Coated Finish
Warranty	Limited Lifetime Warranty	Limited Lifetime Warranty
SKU	1915-1-400-00	1915-1-300-00

COMPANION
PRODUCT

WALL MOUNT
HARDWARE KIT

••• SEE PAGE 58



ADJUSTABLE CPU HOLDER



ADJUSTABLE CPU HOLDER

The Kendall Howard Adjustable CPU Holder is a superior mounting solution for safely securing your computer off the floor and at a more convenient access height. The universal design adjusts both vertically and horizontally to accommodate computer towers large or small. With multiple mounting options you can choose whether you want to suspend your computer from under the work surface or mount to the side of your workstation.

FEATURES

- Tool-less adjustability
- 60 lb. weight capacity
- Ships fully assembled
- Includes two hook and loop straps
- Installation hardware included
- Made in the USA
- Limited Lifetime Warranty

Adjustable Height & Width - Adjusting the CPU Holder is easy! Simply twist the comfort-grip knob on either side of the vertical channel (to adjust vertically) or on the bottom of the shelf (to adjust horizontally) and slide to the desired location. Retighten the knobs and you're all set!

All Steel Construction - The robust, all steel construction is a strong, dependable solution for securing your computer.

Two Mounting Options - Every workstation is different! That is why we designed the Adjustable CPU Holder to be mounted through the top plate into a work surface, or through the vertical channel into the side of a desk or nearby wall.

Added Support - The included hook and loop straps can be secured through any of the many lacing slots for additional support. This is especially helpful for very large and heavy computer towers.



Product Name	Adjustable CPU Holder
Width	Adjustable 4" to 9"
Depth	7.21" (Supports CPU's up to 25")
Height	Adjustable 13.2" to 23.3"
Shipping Method	Small Package
Color	Black Powder Coated Finish
Warranty	Limited Lifetime Warranty
SKU	1915-1-500-00

INTRODUCTION

Full Size Server Racks/Cabinets

For a versatile and stable rack solution, check out our full size racks and enclosures. Each of our uniquely designed products, including telco and portable racks, is ready to house your equipment and add functionality to your infrastructure.



Open Frame Full Size Racks

2-Post Eco Rack	22
Conversion Kits	23
2-Post Cable Cove Rack	24
Knockdown 4-Post Open Frame Rack	25
Portable Racks	26



SOHO Server Cabinets

Compact Series SOHO Server Cabinets	27
---	----



Full Size Server Cabinets

LINIER® Full Size Server Cabinets	28-33
24" Depth	30-31
36" Depth	32-33

2-POST ECO RACK



One side 10-32
tapped rails



One side universal
cage nut style rails

2-POST ECO RACK

The Kendall Howard 2-Post Eco Rack is the perfect racking solution for wiring closets, telecom rooms, and data centers. This 19" EIA compliant rack has an 800 lb. weight capacity that will support all of your telephony and network equipment such as patch panels, switches, routers, and more. The unique design features both cage nut style and 10-32 tapped rails, and with six possible anchor points to ensure stability, the Kendall Howard 2-Post Eco Rack is perfect for any environment.

FEATURES

- One side 10-32 tapped rails
- One side universal cage nut style rails
- 800 lb. weight capacity
- 19" EIA 310-D compliant
- Six anchor points for stability
- Gangable
- Made in the USA
- Limited Lifetime Warranty

Economical Design - Made from American grade, cold rolled steel, this relay rack combines the strength and dependability of a Kendall Howard solution with a cost-conscious price point.

Gangable - Gangable design makes locking these racks together quick and easy.

Quick Assembly - The knockdown frame is quick and easy to assemble. The self-squaring frame only requires a wrench and approximately 15 minutes of assembly time before your rack is ready to be populated.

Unique Rail Design - Whether you like working with universal cage nut style rails or tapped rails, the Kendall Howard 2-Post Eco Rack allows you to use your preference. The U shaped rail channel has the universal square cut outs for cage nuts on one side and 10-32 tapped mounting holes on the other.

COMPANION PRODUCTS

TELCO SHELF
••• SEE PAGE 47



CABLE MANAGERS
••• SEE PAGES 36-42



	25U	45U
Product Name	2-Post Eco Rack	2-Post Eco Rack
Width	20.11"	20.11"
Depth	16"	16"
Height	47.11"	82.11"
Shipping Method	Small Package	Small Package
Color	Black Powder Coated Finish	Black Powder Coated Finish
Warranty	Limited Lifetime Warranty	Limited Lifetime Warranty
SKU	1911-3-100-25	1911-3-100-45



CONVERSION KITS

Conversion Kits are a genius accessory to any 2-post rack. When upgrading to equipment that requires 4-point mounting, you no longer have to replace your perfectly good telco racks. You can now easily transform any two 2-post racks into the 4-post rack you need. In addition the 2-piece or 4-piece Conversion Kits can be used to secure a fully populated 2-post rack to a wall. This is especially helpful when anchoring the 2-post rack to the floor is not an option. Whether anchoring two racks together or bracing them to the wall, the Kendall Howard Conversion Kits provide a money saving, safe, and dependable solution.

FEATURES

- Adjustable from 20" to 35"
- Mounting hardware not included
- Made in the USA
- Limited Lifetime Warranty

2-Piece Kit - The 2-Piece Conversion Kit is easy to use and adds strength and stability to any 2-post telco rack by allowing you to anchor to a wall.

4-Piece Kit - The 4-Piece Conversion Kit allows you to upgrade any 2-post rack to a 4-post rack, with an adjustable depth of 24" to 40".

Adjustable Depth - Each support bracket can adjust from 20" to 35" deep to suit your particular installation requirements.

Great Cable Lacing Option - These horizontal brackets provide a great option for securing heavy and obtrusive trunk cabling up and out of the way.

Only Uses 2U of Space - The support braces mount directly on to the vertical rack rails with standard rack hardware. Each brace requires only 2U of rack space leaving you plenty of room for your network, A/V, and other rackmount equipment.

Product Name	2-Piece Conversion Kit	4-Piece Conversion Kit
Width	1"	1"
Depth	Adjustable 20" - 35"	Adjustable 20" - 35"
Height	4"	4"
Shipping Method	Small Package	Small Package
Color	Black Powder Coated Finish	Black Powder Coated Finish
Warranty	Limited Lifetime Warranty	Limited Lifetime Warranty
SKU	1927-3-002-00	1927-3-004-00

2-POST CABLE COVE RACK



41U

Computers, monitors, wiring and accessories not included.



2-POST CABLE COVE RACK

The Kendall Howard 2-Post Cable Cove Rack is the perfect rack for high density network and telecom installations. Its 1,200 lb. weight capacity and 4" vertical cable channels permit the Cable Cove Rack to handle just about any network large or small. It is designed to embrace trunk cabling so load it up with servers, UPS's, rack shelves, patch panels, switches, and more. The 2-Post Cable Cove Rack is ready for the challenge!

FEATURES

- Two 4" internal vertical cable channels
- 1,200 lb. weight capacity
- Base capable of anchoring to floors
- 19" EIA 310-D compliant
- Made in the USA
- Limited Lifetime Warranty

Vertical Cable Management Channels - The two 4" cable management channels make routing cables vertically a snap! The unique design eliminates the need for exterior vertical cable managers.

Gangable - Gangable design makes locking these racks together quick and easy.

Heavy Duty Design - The heavy duty steel construction provides the highest quality 2-post rack solution on the market.

Quick Assembly - The knockdown frame is quick and easy to assemble. The self-squaring frame only requires a wrench and approximately 15 minutes of assembly time before your rack is ready to be populated.

Cage Nut Style Rails - The dual sided universal cage nut style mounting rails allow you to use the rack screws and cage nuts that you prefer.

	41U
Product Name	2-Post Cable Cove Rack
Width	23.812"
Depth	16"
Height	78.062"
Shipping Method	Small Package
Color	Black Powder Coated Finish
Warranty	Limited Lifetime Warranty
SKU	1911-3-000-41

CANTILEVER RACK SHELVES

... SEE PAGES 44-45



CABLE MANAGERS

... SEE PAGES 36-42



RACK SCREWS

... SEE PAGE 56



CAGE NUTS

... SEE PAGE 57



COMPANION
PRODUCTS

KNOCKDOWN 4-POST OPEN FRAME RACK



KNOCKDOWN 4-POST OPEN FRAME RACK

The Knockdown 4-Post Open Frame Rack is one of the strongest adjustable open frame knockdown racks on the market today. Our unique, heavy duty, square tube steel design assembles with just a few bolts and makes this racking system affordable, versatile, and easy to ship. Its knockdown design makes it able to ship in a small wooden crate and ship out as a small package that can be delivered the next day. For a reliable and convenient racking solution, the Knockdown 4-Post Open Frame Rack is a great option.

FEATURES

- Fully adjustable rails from 3" to 36"
- Levelers included
- Assembles in less than 30 minutes
- Cage nut style rails
- 2,000 lb. weight capacity (1,000 lbs. on casters)
- 19" EIA 310-D compliant
- Made in the USA
- Limited Lifetime Warranty

Mount More Rails - Most 4-post racks allow for only two sets of vertical rails to be mounted to the rack. With our design, you can add a third set of rails and mount equipment that has different mounting depths in the same rack.

Ships in Knockdown Position - The rack's knockdown design allows us to ship the product as a small package keeping our shipping costs low and allowing the package to ship to almost anywhere in the world next day.

Easy to Install - Levelers are included to make installation quick and easy. To make the unit mobile, add on our caster kit.

COMPANION
PRODUCT

CASTER KIT
... SEE PAGE 73



Product Name	41U Knockdown 4-Post Open Frame Rack
Width	23.4"
Depth	36.2"
Height	74.9"
Shipping Method	Small Package
Color	Black Powder Coated Finish
Warranty	Limited Lifetime Warranty
SKU	1940-3-001-41

PORTABLE RACKS



Computers, monitors, wiring, and accessories not included. Shown with optional casters.

PORTABLE RACKS

Kendall Howard Portable Modular Rack systems are the perfect solution for just about any racking need. They are durable, lightweight, stackable, and completely portable. The flexible design gives you the strongest portable solution on the market today. With its expandability, strength, and aesthetic design, this is one racking system you will not outgrow.

FEATURES

- Fixed cage nut style rails
- Heavy duty spring loaded handles
- 500 lb. weight capacity
- Interlocking corner guards
- 20" mounting depth
- 19" EIA 310-D compliant
- Made in the USA
- Limited Lifetime Warranty



Interlocking corners allow easy stacking and expansion.

Unyielding Construction - Unlike most portable racking systems that are constructed from compressed wood products, Portable Racks are made from four pieces of steel that are structurally riveted and welded together.

Stackable - Interlocking corners allow the Portable Racks to be stacked. For a more secure hold, install the optional Stacking Bracket Kit to lock two racks together.

Portable - The lightweight, sturdy construction paired with the spring-loaded side handles allow this racking system to be easily transported. Add on one of the optional Portable Rack Caster Kits and turn it into a mobile computer/networking system.

STACKING BRACKET KIT

- Gang Portable Modular Racks together
- Comes with hardware
- Installs in minutes
- Made in the USA
- Limited Lifetime Warranty



SKU 1921-1-000-00

PORTABLE RACK CASTER KIT

- Includes four casters and mounting hardware
- Non-marking polyurethane wheels
- Supports 200 lbs. per caster
- Made in the USA
- Limited Lifetime Warranty



SKU 0013-2-004-00 (non-locking)
SKU 0014-2-004-00 (locking)



Product Name	8U Portable Rack	12U Portable Rack	20U Portable Rack
Width	21.35"	21.35"	21.35"
Depth	21"	21"	21"
Height	17.6"	24.6"	38.6"
Warranty	Limited Lifetime Warranty	Limited Lifetime Warranty	Limited Lifetime Warranty
SKU	1920-3-000-08	1920-3-000-12	1920-3-000-20

COMPACT SERIES SOHO SERVER CABINETS



COMPACT SERIES SOHO SERVER CABINETS

These sleek and robust server cabinets are specially designed for the small business, home office or IT professional who wants better than just "good enough". The low profile Compact Series SOHO Server Cabinets are perfect for any environment.

FEATURES

- Locking lift off front and rear perforated doors (does not apply to cabinets without doors)
- Adjustable cage nut style rails
- Includes fan and casters
- 28" maximum mounting depth
- 19" EIA 310-D compliant
- Made in the USA
- Limited Lifetime Warranty

Quality Enclosure - The quality construction provides a dependable cabinet to store expensive equipment and devices.

Mobility - Included caster kit creates a mobile racking system perfect for home, small office or studio environments.

Adjustable Rails - Universal cage nut style rails can be adjusted from 3" to 29" deep to accommodate various depth equipment.

Cooling/Ventilation - Vented side panels and included 78 cfm fan promote air flow and prevent hot spots.

Cable Routing Slot - The 10" x 2.25" cut out on the bottom rear of the cabinet provides a cable entrance point for network, telecom, and/or power cables.



DOORS

	8U	12U
Product Name	Compact Series SOHO Server Cabinet	Compact Series SOHO Server Cabinet
Width	24.44"	24.44"
Depth	32.24"	32.24"
Height	20.34"	27.34"
Shipping Method	LTL Freight	LTL Freight
Color	Black Powder Coated Finish	Black Powder Coated Finish
Warranty	Limited Lifetime Warranty (Fan: 1-Year Warranty)	Limited Lifetime Warranty (Fan: 1-Year Warranty)
SKU	1932-3-001-08	1932-3-001-12



NO DOORS

	8U	12U
Product Name	Compact Series SOHO Server Cabinet - No Doors	Compact Series SOHO Server Cabinet - No Doors
Width	24.44"	24.44"
Depth	30.00"	30.00"
Height	20.34"	27.34"
Shipping Method	LTL Freight	LTL Freight
Color	Black Powder Coated Finish	Black Powder Coated Finish
Warranty	Limited Lifetime Warranty (Fan: 1-Year Warranty)	Limited Lifetime Warranty (Fan: 1-Year Warranty)
SKU	1932-3-201-08	1932-3-201-12

LINIER® FULL SIZE SERVER CABINETS

LINIER®

TWO DEPTHS! FOUR HEIGHTS! 12 STYLES!

LINIER® Full Size Server Cabinets and network enclosures are designed to be a cost-effective solution that addresses your network infrastructure needs. The LINIER® Full Size Server Cabinets are available in two depths, four heights, and 12 door styles, that are in stock or will ship in 24-48 hours. With the LINIER® brand you can get exactly what you need, when you need it, at a price you can afford!

HOW TO ORDER:

1. PICK YOUR DEPTH:

- 24" PAGES 30-31 - 36" PAGES 32-33



2. PICK YOUR HEIGHT:

- 22U, 27U, 37U, 42U



3. PICK YOUR DOOR TYPES:

- COMBINATIONS OF GLASS, VENTED, SOLID, CONVEX,
NO DOORS, NO SIDES



LINIER® brand server racks ship on special shock pallets to ensure that your products make it safely to your door!





Fan cut outs on top allow you to easily install optional fans.



Top and bottom removable cable slots for added versatility.



Security lock on front and rear doors help protect your valuable equipment.



Two sets of adjustable cage nut style mounting rails.



Removable/lockable side panels allow you easy access to all of your equipment.

The LINIER® brand rack systems are perfect for:

- Server Rooms
- Security Storage
- Home Office
- Home Audio
- Data Centers
- SMB Network Storage



LINIER® FULL SIZE SERVER CABINETS - 24" DEPTH



LINIER® 3100 Series
- Glass Door/Vented Door

The LINIER® 24" deep cabinets are suitable for telecom and datacom systems, audio/visual equipment, and other shallower equipment.

LINIER® SERVER CABINET – 24" DEPTH

The Kendall Howard LINIER® Server Cabinets are packed with some of the most popular rack features at a price virtually anyone can afford. The cabinets feature laser knockouts allowing you to install fans, while removable slots provide numerous cable routing options. Built with a 24" depth, these LINIER® cabinets are suitable for telecom and datacom systems, A/V equipment, and other small network equipment. To suit your particular network install, numerous door styles are available (including glass, solid, vented, and convex), and we even offer cabinets without doors and/or without side panels. When you need a low cost solution packed with features, the LINIER® Server Cabinets deliver!

FEATURES

- 1,300 lb. weight capacity (800 lbs. on casters)
- Preinstalled casters and levelers
- Includes two sets of cage nut style mounting rails
- Removable locking side panels (Feature not applicable to 3170 series)
- Top includes removable laser knockouts
- 19" EIA 310-D compliant
- Made in the USA
- 5-Year Limited Warranty

Easy Installation - Casters and levelers are preinstalled to allow you to easily move and load your system into the desired location.

Removable Cable Access Panels - The top and bottom of the server cabinet includes removable laser knockouts for cable access and added versatility.

Locking, Removable Side Panels - To allow access to the equipment, the side panels are both removable and lockable giving you the option to create the cabinet that best suits your needs. (Feature not applicable to 3170 series)

Adjustable Rails - Includes two sets of adjustable, vertical rails which extend to a maximum depth of 24" for versatile mounting options.

Secured System - Both doors are equipped with locks to protect and secure your valuable equipment. (Feature not applicable to 3170 and 3180 series)

FOUR DOOR TYPES



COMPANION
PRODUCT

RAIL KITS

... SEE PAGE 54





Top view

(Can install up to two fans)



Bottom view

(Large 9" x 12" cut out with included filler panels)



Side view with side panels



Side view with no side panels

Door/Series	Size	Dimensions	SKU
3100 Series: Glass Door/ Vented Door	22U	24" W x 27" D x 45.50" H	3100-3-024-22
	27U	24" W x 27" D x 54.25" H	3100-3-024-27
	37U	24" W x 27" D x 71.75" H	3100-3-024-37
	42U	24" W x 27" D x 80.50" H	3100-3-024-42
3101 Series: Glass Door/ Solid Door	22U	24" W x 27" D x 45.50" H	3101-3-024-22
	27U	24" W x 27" D x 54.25" H	3101-3-024-27
	37U	24" W x 27" D x 71.75" H	3101-3-024-37
	42U	24" W x 27" D x 80.50" H	3101-3-024-42
3102 Series: Convex Door/ Glass Door	22U	24" W x 27.50" D x 45.50" H	3102-3-024-22
	27U	24" W x 27.50" D x 54.25" H	3102-3-024-27
	37U	24" W x 27.50" D x 71.75" H	3102-3-024-37
	42U	24" W x 27.50" D x 80.50" H	3102-3-024-42
3103 Series: Glass Door/ Glass Door	22U	24" W x 27" D x 45.50" H	3103-3-024-22
	27U	24" W x 27" D x 54.25" H	3103-3-024-27
	37U	24" W x 27" D x 71.75" H	3103-3-024-37
	42U	24" W x 27" D x 80.50" H	3103-3-024-42
3104 Series: Solid Door/ Convex Door	22U	24" W x 27.50" D x 45.50" H	3104-3-024-22
	27U	24" W x 27.50" D x 54.25" H	3104-3-024-27
	37U	24" W x 27.50" D x 71.75" H	3104-3-024-37
	42U	24" W x 27.50" D x 80.50" H	3104-3-024-42
3105 Series: Convex Door/ Convex Door	22U	24" W x 28" D x 45.50" H	3105-3-024-22
	27U	24" W x 28" D x 54.25" H	3105-3-024-27
	37U	24" W x 28" D x 71.75" H	3105-3-024-37
	42U	24" W x 28" D x 80.50" H	3105-3-024-42
3106 Series: Solid Door/ Vented Door	22U	24" W x 27" D x 45.50" H	3106-3-024-22
	27U	24" W x 27" D x 54.25" H	3106-3-024-27
	37U	24" W x 27" D x 71.75" H	3106-3-024-37
	42U	24" W x 27" D x 80.50" H	3106-3-024-42
3107 Series: Vented Door/ Vented Door	22U	24" W x 27" D x 45.50" H	3107-3-024-22
	27U	24" W x 27" D x 54.25" H	3107-3-024-27
	37U	24" W x 27" D x 71.75" H	3107-3-024-37
	42U	24" W x 27" D x 80.50" H	3107-3-024-42
3108 Series: Solid Door/ Solid Door	22U	24" W x 27" D x 45.50" H	3108-3-024-22
	27U	24" W x 27" D x 54.25" H	3108-3-024-27
	37U	24" W x 27" D x 71.75" H	3108-3-024-37
	42U	24" W x 27" D x 80.50" H	3108-3-024-42
3110 Series: Convex Door/ Vented Door	22U	24" W x 27.50" D x 45.50" H	3110-3-024-22
	27U	24" W x 27.50" D x 54.25" H	3110-3-024-27
	37U	24" W x 27.50" D x 71.75" H	3110-3-024-37
	42U	24" W x 27.50" D x 80.50" H	3110-3-024-42
3170 Series: No Doors/ No Side Panels	22U	24" W x 27" D x 45.50" H	3170-3-024-22
	27U	24" W x 27" D x 54.25" H	3170-3-024-27
	37U	24" W x 27" D x 71.75" H	3170-3-024-37
	42U	24" W x 27" D x 80.50" H	3170-3-024-42
3180 Series: No Doors	22U	24" W x 27" D x 45.50" H	3180-3-024-22
	27U	24" W x 27" D x 54.25" H	3180-3-024-27
	37U	24" W x 27" D x 71.75" H	3180-3-024-37
	42U	24" W x 27" D x 80.50" H	3180-3-024-42

LINIER® FULL SIZE SERVER CABINETS - 36" DEPTH



LINIER® 3110 Series
- Convex Door/Vented Door

The LINIER® 36" deep cabinets are suitable for network servers, battery backups, switching banks, and other larger pieces of equipment.

LINIER® SERVER CABINET – 36" DEPTH

The Kendall Howard LINIER® Server Cabinets are packed with some of the most popular rack features at a price virtually anyone can afford. The cabinets feature laser knockouts allowing you to install fans, while removable slots provide numerous cable routing options. Built with a 36" depth, these LINIER® cabinets are suitable for network servers, battery backups, switching banks, and other larger network equipment. To suit your particular network install, numerous door styles are available (including glass, solid, vented, and convex), and we even offer cabinets without doors and/or without side panels. When you need a low cost solution packed with features, the LINIER® Server Cabinets deliver!

FEATURES

- 1,300 lb. weight capacity (800 lbs. on casters)
- Preinstalled casters and levelers
- Includes two sets of cage nut style mounting rails
- Removable locking side panels (Feature not applicable to 3170 series)
- Top includes removable laser knockouts
- 19" EIA 310-D compliant
- Made in the USA
- 5-Year Limited Warranty

Easy Installation - Casters and levelers are preinstalled to allow you to easily move and load your system into the desired location.

Removable Cable Access Panels - The top and bottom of the server cabinet includes removable laser knockouts for cable access and added versatility.

Locking, Removable Side Panels - To allow access to the equipment, the side panels are both removable and lockable giving you the option to create the cabinet that best suits your needs. (Feature not applicable to 3170 series)

Adjustable Rails - Includes two sets of adjustable, vertical rails which extend to a maximum depth of 36" for versatile mounting options.

Secured System - Both doors are equipped with locks to protect and secure your valuable equipment. (Feature not applicable to 3170 and 3180 series)

FOUR DOOR TYPES



COMPANION
PRODUCT

RAIL KITS

... SEE PAGE 54





Top view
(Can install up to four fans)

Bottom view
(Large 12" x 12" cut out with included filler panels)



Side view with side panels



Side view with no side panels

Door/Series	Size	Dimensions	SKU
3100 Series: Glass Door/ Vented Door	22U	24" W x 37.72" D x 45.50" H	3100-3-001-22
	27U	24" W x 37.72" D x 54.25" H	3100-3-001-27
	37U	24" W x 37.72" D x 71.75" H	3100-3-001-37
	42U	24" W x 37.72" D x 80.50" H	3100-3-001-42
3101 Series: Glass Door/ Solid Door	22U	24" W x 37.72" D x 45.50" H	3101-3-001-22
	27U	24" W x 37.72" D x 54.25" H	3101-3-001-27
	37U	24" W x 37.72" D x 71.75" H	3101-3-001-37
	42U	24" W x 37.72" D x 80.50" H	3101-3-001-42
3102 Series: Convex Door/ Glass Door	22U	24" W x 38.22" D x 45.50" H	3102-3-001-22
	27U	24" W x 38.22" D x 54.25" H	3102-3-001-27
	37U	24" W x 38.22" D x 71.75" H	3102-3-001-37
	42U	24" W x 38.22" D x 80.50" H	3102-3-001-42
3103 Series: Glass Door/ Glass Door	22U	24" W x 37.72" D x 45.50" H	3103-3-001-22
	27U	24" W x 37.72" D x 54.25" H	3103-3-001-27
	37U	24" W x 37.72" D x 71.75" H	3103-3-001-37
	42U	24" W x 37.72" D x 80.50" H	3103-3-001-42
3104 Series: Solid Door/ Convex Door	22U	24" W x 38.22" D x 45.50" H	3104-3-001-22
	27U	24" W x 38.22" D x 54.25" H	3104-3-001-27
	37U	24" W x 38.22" D x 71.75" H	3104-3-001-37
	42U	24" W x 38.22" D x 80.50" H	3104-3-001-42
3105 Series: Convex Door/ Convex Door	22U	24" W x 38.72" D x 45.50" H	3105-3-001-22
	27U	24" W x 38.72" D x 54.25" H	3105-3-001-27
	37U	24" W x 38.72" D x 71.75" H	3105-3-001-37
	42U	24" W x 38.72" D x 80.50" H	3105-3-001-42
3106 Series: Solid Door/ Vented Door	22U	24" W x 37.72" D x 45.50" H	3106-3-001-22
	27U	24" W x 37.72" D x 54.25" H	3106-3-001-27
	37U	24" W x 37.72" D x 71.75" H	3106-3-001-37
	42U	24" W x 37.72" D x 80.50" H	3106-3-001-42
3107 Series: Vented Door/ Vented Door	22U	24" W x 37.72" D x 45.50" H	3107-3-001-22
	27U	24" W x 37.72" D x 54.25" H	3107-3-001-27
	37U	24" W x 37.72" D x 71.75" H	3107-3-001-37
	42U	24" W x 37.72" D x 80.50" H	3107-3-001-42
3108 Series: Solid Door/ Solid Door	22U	24" W x 37.72" D x 45.50" H	3108-3-001-22
	27U	24" W x 37.72" D x 54.25" H	3108-3-001-27
	37U	24" W x 37.72" D x 71.75" H	3108-3-001-37
	42U	24" W x 37.72" D x 80.50" H	3108-3-001-42
3110 Series: Convex Door/ Vented Door	22U	24" W x 38.22" D x 45.50" H	3110-3-001-22
	27U	24" W x 38.22" D x 54.25" H	3110-3-001-27
	37U	24" W x 38.22" D x 71.75" H	3110-3-001-37
	42U	24" W x 38.22" D x 80.50" H	3110-3-001-42
3170 Series: No Doors/ No Side Panels	22U	24" W x 37.72" D x 45.50" H	3170-3-001-22
	27U	24" W x 37.72" D x 54.25" H	3170-3-001-27
	37U	24" W x 37.72" D x 71.75" H	3170-3-001-37
	42U	24" W x 37.72" D x 80.50" H	3170-3-001-42
3180 Series: No Doors	22U	24" W x 37.72" D x 45.50" H	3180-3-001-22
	27U	24" W x 37.72" D x 54.25" H	3180-3-001-27
	37U	24" W x 37.72" D x 71.75" H	3180-3-001-37
	42U	24" W x 37.72" D x 80.50" H	3180-3-001-42

INTRODUCTION

Rack Accessories

Turn your rack into a network solution! Choose from numerous rack accessories to create an improved and dependable network structure. Accessories make the rack efficient and more useful, so go ahead and add shelves, drawers, cable managers, and more!



Cable Management

Flanged Lacing Bars	36
Cable Lacing Shelf	37
Flat Cable Lacing Panels/Cable Routing Blanks	38
D-Ring Cable Management Kit/Managed Cable Minder	39
Tool-less D-Ring Cable Managers	40
Finger Duct/Slotted Routing Cable Managers	41
Universal Wire Minder	42



Rack Panels & Shelves

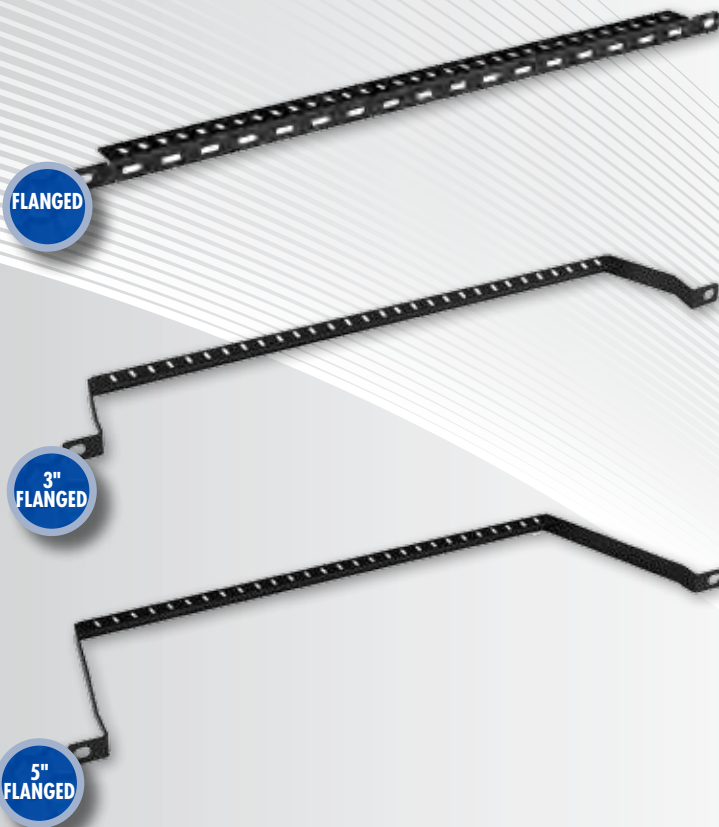
Spacer Blanks/Filler Panels	43
Cantilever Rack Shelves	44-45
Centerline Shelves	46
2-Piece Telco Rack Shelf	47
4-Point Adjustable Shelves	48
Sliding Rack Shelves/20" Fixed Rack Shelf	49
Keyboard Trays	50-51
Rackmount Drawers	52



Hardware, Tools, & Accessories

Fans	53
LINIER® Vertical Rail Kits	54
LINIER® Caster Base	55
Rack Screws and Cage Nuts	56-57
Mounting Kits/Hook and Loop Cable Ties	58
Rack Helper/LINIER® Wall Mount Combination Lock	59

FLANGED LACING BARS



FLANGED LACING BARS

Properly manage and protect your cables with the Kendall Howard Flanged Lacing Bar. Its size and versatility makes this a true space saving cable manager. Designed to mount above, below, behind, or in front of your network devices, the Flanged Lacing Bar allows you to do more by using less space. And that's not all. It provides a much needed stress relief for cable connections, and works well when routing just a few cables between switches and patch panels. Crowded spaces, unorganized cables, and strained connections are no longer an issue with the Kendall Howard Flanged Lacing Bar.

FEATURES

- Features 1/2" slots to use with any 1/2" cable ties
- Versatile, horizontal mounting
- Uses less than one U space, or none at all if mounted in front of or behind equipment
- 19" EIA 310-D compliant
- Made in the USA
- Limited Lifetime Warranty

Space Saver - Mount the bar above, below, behind, or in front of your network device, vacating valuable U space for other network installation needs. The bar itself uses less than one U space, or none at all if mounted in front of or behind equipment.

Promotes Better Bend Radius - The added depth creates a better bend radius for cables and limits the risk of slower data speeds and broken cables. (Only applies to 3" and 5" Flanged Lacing Bars)

Numerous Lacing Slots - Lacing slots are included on both flanges allowing you to route cables top to bottom or left to right. These lacing slots also nearly cover the entire length of the panel allowing convenient routing to both ends.

Strain Reliever - Designed to relieve cable stress and helps avoid pulling cables when routing them from one side of a rack to the other.

Easy to Use - Simply secure cables to any of the numerous lacing slots by using the Hook and Loop Cable Ties.

COMPANION
PRODUCT

HOOK AND
LOOP CABLE TIES

... SEE PAGE 58



Product Name	Flanged Lacing Bar	3" Deep Flanged Lacing Bar	5" Deep Flanged Lacing Bar
Width	19"	19"	19"
Depth	1"	3"	5"
Height	0.583"	0.563"	0.563"
Shipping Method	Small Package	Small Package	Small Package
Color	Black Powder Coated Finish	Black Powder Coated Finish	Black Powder Coated Finish
Warranty	Limited Lifetime Warranty	Limited Lifetime Warranty	Limited Lifetime Warranty
SKU	1903-1-100-00	1903-1-101-00	1903-1-102-00
SKU - 10 Pack	1903-1-110-00	1903-1-111-00	1903-1-112-00



CABLE LACING SHELF

The Kendall Howard Cable Lacing Shelf is no ordinary shelf. It is designed to offer a supportive surface for cables when securing, routing, and organizing connection points to and from switches, patch panels, and other rackmount equipment. For versatile mounting, the Cable Lacing Shelf can be placed above, below, behind, or in front of your network devices. As a result, valuable rack space is made available for other rack configuration needs. Managing cables on this lacing shelf is easy with the help of the Hook and Loop Cable Ties. Simply bundle cables to the Cable Lacing Shelf with the Hook and Loop Cable Ties to add support, organization, and protection of your network cabling.

FEATURES

- 6" depth
- Supports up to 10 lbs. of cables
- 19" EIA 310-D compliant
- Made in the USA
- Limited Lifetime Warranty

Quality Cable Manager - Sturdy and reliable construction makes this a truly dependable and secure lacing shelf.

Numerous Cable Lacing Points - Features horizontal and vertical lacing slots to allow for dual routing options. Hook and Loop Cable Ties work great when securing and managing cables on this shelf.

Promotes Better Bend Radius - The 6" depth helps to promote a better bend radius for cables, and limits the risk of slower data speeds, disconnections, and damaged cables.

Product Name	Cable Lacing Shelf
Width	19"
Depth	6"
Height	1.72"
Shipping Method	Small Package
Color	Black Powder Coated Finish
Warranty	Limited Lifetime Warranty
SKU	1903-1-200-01

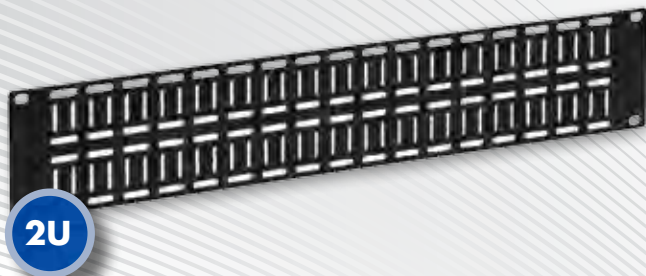
COMPANION PRODUCT

HOOK AND LOOP CABLE TIES

... SEE PAGE 58



FLAT CABLE LACING PANELS/CABLE ROUTING BLANKS



FLAT CABLE LACING PANELS

Flat Cable Lacing Panels are a top choice for managing and routing cables to and from patch panels, switches or other networking devices. Designed with you in mind, this cable management panel was built to support and organize cables, remove stress and tension from connection points, and provide easy access to your equipment.

FEATURES

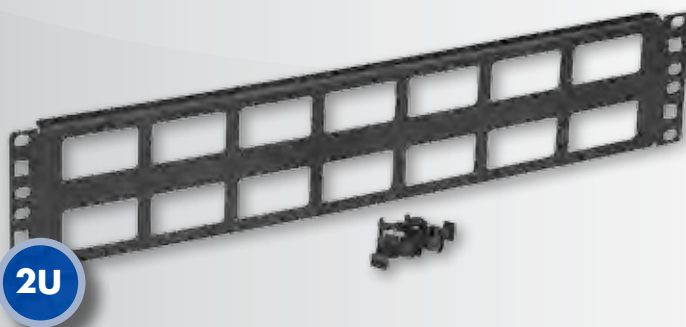
- Supports and relieves strain at connection points
- Vertical and horizontal lacing slots
- 19" EIA 310-D compliant
- Made in the USA
- Limited Lifetime Warranty

Numerous Lacing Slots - Lacing slots nearly cover the entire length of the panel allowing convenient routing to either side of the rack.

Easy Maintenance - Easily locate and switch out cables as necessary with the Flat Cable Lacing Panel.

Strain Reliever - Helps prevent connection ports from being damaged or disconnected.

	1U	2U
Product Name	Flat Cable Lacing Panel	Flat Cable Lacing Panel
Width	19"	19"
Depth	0.06"	0.06"
Height	1.72"	3.47"
Warranty	Limited Lifetime Warranty	Limited Lifetime Warranty
SKU	1903-1-001-01	1903-1-002-02
SKU - 10 Pack	1903-1-011-01	1903-1-012-02



CABLE ROUTING BLANKS

Cable Routing Blanks provide the perfect way to route cables within a rack. With this simple device you can conveniently route cables from the front to the back of the cabinet, while bringing organization to your cables and connections.

FEATURES

- Low profile design
- Large cut outs
- Black powder coat finish
- Rounded corners
- Made in the USA
- Limited Lifetime Warranty

Large Cable Cut Outs - Large open cut outs provide ample room for routing various cables such as copper, fiber optic, telecom, and power cables.

Tool-Less Mounting - For smaller cable bundle installations, the included tool-less clips make installation easy with universal cage nut style rails. For heavier cable bundles, we recommend using rack screws and cage nuts.

	1U	2U
Product Name	Cable Routing Blank	Cable Routing Blank
Width	19"	19"
Depth	0.5"	0.5"
Height	1.72"	3.47"
Warranty	Limited Lifetime Warranty	Limited Lifetime Warranty
SKU	1902-1-001-01	1902-1-002-02

D-RING CABLE MANAGEMENT KIT/ MANAGED CABLE MINDER



Product Name	1U D-Ring Cable Management Kit
Width	19"
Depth	4.3"
Height	1.72"
Shipping Method	Small Package
Color	Black Powder Coated Finish
Warranty	Limited Lifetime Warranty
SKU	1901-1-000-01

D-RING CABLE MANAGEMENT KIT

The Kendall Howard D-Ring Cable Management Kit gives installers and network technicians a flexible and functional cable management bracket that will easily manage all types of cables. With more than 40 different configurations, it is easy to manage cables vertically, horizontally, and diagonally.

FEATURES

- Includes five steel D-rings
- Includes 16 Snap-in nylon clips
- Nylon clips are UL 94V-2 recognized
- More than 40 different configurations
- 19" EIA 310-D compliant
- Made in the USA
- Limited Lifetime Warranty

Five Heavy Duty Steel D-Rings - Powder coated, steel D-rings feature numerous mounting holes so that they can be installed to the rackmount panel vertically or horizontally.

Flexible Nylon Clips - Latch gate style clips install with only fingertip pressure. The rectangular cable clips can be installed to run cables vertically or horizontally.

Flanged Support Panel - Rackmountable panel is flanged for added strength and durability.



Product Name	1U Managed Cable Minder
Width	19"
Depth	2"
Height	1.72"
Shipping Method	Small Package
Color	Black Powder Coated Finish
Warranty	Limited Lifetime Warranty
SKU	1903-3-000-01

MANAGED CABLE MINDER

Managing cables within a rack or cabinet doesn't have to be a hassle. The Kendall Howard Managed Cable Minder offers a simple solution for routing cables from patch panels, routers, switches, or any other component installed within your rack. With 28 independently rotating clips, you'll find that organizing your network cables has never been easier.

FEATURES

- 28 nylon locking cable clips
- Low profile 1U design
- 19" EIA 310-D compliant
- Made in the USA
- Limited Lifetime Warranty

Nylon Cable Management Clips - The 28 semi-hard micro clips can all be rotated individually which allows for easy cable routing in any direction. Latch gate style clips can be locked so that cables will not slip out once mounted.

Flanged Mounting Panel - Mounting panel is flanged on both the top and bottom for added strength and rigidity.

TOOL-LESS D-RING CABLE MANAGERS



Side view



Back view

TOOL-LESS 5X D-RING CABLE MANAGERS

The Kendall Howard Tool-less 5X D-Ring Cable Manager combines the best parts of our D-Ring Cable Management Kit and our Cable Routing Blanks. The blend of D-rings and cable routing cut outs make this one of the most versatile cable managers on the market! Whether you're routing cables from the front to the back of your cabinet or organizing and supporting patch cables, this 5X D-Ring Cable Manager will be an effective tool for your IT installation.

FEATURES

- Seven or 14 cable routing slots
- Five D-rings included
- 19" EIA 310-D compliant
- Made in the USA
- Limited Lifetime Warranty

D-Rings - The open D-rings provide a large supported area to organize and route cable bundles in 2-post racks, wall mount racks, server racks, and more. The 1U features five 2.25" x 1.75" D-rings and the 2U features five 3.25" x 3.5" D-rings.

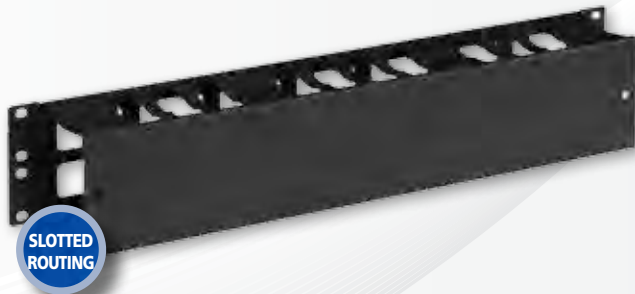
Cable Cut Outs - The large routing holes provide the support you need to run cables from the back of the rack to the front.

Various Mounting Positions - Cable manager can be mounted in two different positions, maximizing your cable management options. Face the D-rings toward the front of the rack to easily manage and support patch cables, or face them toward the back of the rack where the open design provides easy support of trunk cables.

Tool-less - Included with the cable manager are tool-less clips that snap into any cage nut style rail while eliminating the need for hardware. Standard mounting holes can be used in conjunction with rack screws on tapped rails.

	1U	2U
Product Name	Tool-less 5X D-Ring Cable Manager	Tool-less 5X D-Ring Cable Manager
Width	19"	19"
Depth	2.264"	3.25"
Height	1.72"	3.47"
Shipping Method	Small Package	Small Package
Color	Black Powder Coated Finish	Black Powder Coated Finish
Warranty	Limited Lifetime Warranty	Limited Lifetime Warranty
SKU	1903-3-100-01	1903-3-100-02

FINGER DUCT/SLOTTED ROUTING CABLE MANAGERS



FINGER DUCT/SLOTTED ROUTING CABLE MANAGERS

Finger Duct and Slotted Routing Cable Managers provide the structure you need to safely organize and protect your network cables. Durable construction makes both styles perfect for high density cable applications with lasting stability. For added protection and storage, the Finger Duct and Slotted Routing Cable Managers come with a cover to conceal cables and create a clean look. Make searching through a jungle of cables obsolete with the Finger Duct and Slotted Routing Cable Managers.

Finger Duct Cable Managers – With its narrow fingers, you can easily separate cables between switches and patch panels with the Finger Duct Cable Manager.

Slotted Routing Cable Managers – For convenient cable routing, the Slotted Routing Cable Manager is an appropriate choice because of its narrow and wide fingers, and the flanged tips help hold cables in place.

FEATURES

- Includes cover
- Durable, steel construction
- Rack-mountable with standard rack hardware
- 19" EIA 310-D compliant
- Made in the USA
- Limited Lifetime Warranty

Cover Included - The easy, slide on cover helps to store and protect cables, and as an added bonus, will create a clean sleek look for your rack.

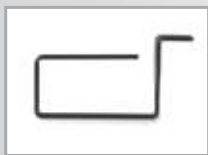
Rear Installation - Rear cut outs and cable managers allow for cables to pass through the back of the unit – a great feature when mounting two units back to back.

Durable Material - Constructed from steel and finished with a texture powder coat, both cable managers are more durable and rigid than plastic cable managers.

Rounded Corners - All corners are rounded to avoid snagging or damaging cables, hands, and/or other devices.

Product Name	1U Finger Duct Cable Manager	2U Finger Duct Cable Manager	1U Slotted Routing Cable Manager	2U Slotted Routing Cable Manager
Width	19"	19"	19"	19"
Depth	3.07"	3.07"	3.07"	3.07"
Height	1.73"	3.48"	1.73"	3.48"
Warranty	Limited Lifetime Warranty	Limited Lifetime Warranty	Limited Lifetime Warranty	Limited Lifetime Warranty
SKU	1903-3-300-01	1903-3-300-02	1903-3-400-01	1903-3-400-02

UNIVERSAL WIRE MINDER



Side view



Front view



Installation options

UNIVERSAL WIRE MINDER

The Kendall Howard Universal Wire Minder makes organizing and protecting cables a snap. Network cables that are not managed properly will decrease productivity, increase down time, and make it more difficult to trace connectivity issues. Rewiring a network or replacing cabling infrastructures can cost tens of thousands of dollars - so do it once, and do it right. What if you don't have a rack? No problem. The Universal Wire Minder can also be mounted along walls or under desks, making it the perfect solution to all of your cable organization needs.

FEATURES

- Easily mounts in eight different positions
- 3" x 1.5" cable capacity
- Compatible with tapped and cage nut style rails
- EIA 310-D compliant
- Made in the USA
- Limited Lifetime Warranty

Multiple Uses - The unique design allows the Universal Wire Minder to be installed onto both cage nut and tapped rails within wall mount cabinets, wall mount racks, telco racks, and even full size server cabinets.

Universal Mounting - The easy to use design can be attached to rackmount rails in eight different positions to route and manage cables.

Large Cable Capacity - The 3" x 1.5" opening can accommodate a variety of cables such as network, telecom, fiber optic, and power cables.

EIA Compliant - Mounting holes are designed to comply with EIA compliant rack rails and components.

COMPANION PRODUCTS

2-POST ECO RACK

... SEE PAGE 22



KNOCKDOWN 4-POST OPEN FRAME RACK

... SEE PAGE 25



Product Name	Universal Wire Minder
Width	3.875"
Depth	2"
Height	1.72"
Shipping Method	Small Package
Color	Black Powder Coated Finish
Warranty	Limited Lifetime Warranty
SKU	0004-1-002-01

SPACER BLANKS/FILLER PANELS



SPACER BLANKS/FILLER PANELS

The Kendall Howard Spacer Blanks are a cut above the rest. Spacer Blanks are often used as a way to fill in any gaps and conceal empty spaces in a rack or enclosure. The use of filler panels not only makes racks look neat, clean, and organized, but when installed properly they provide added support to the mounting rails. These rack panels are also critical for controlling proper air flow especially in cold aisle/hot aisle applications.

FEATURES

- Rounded corners
- Tool-less mounting clips included
- 19" EIA 310-D compliant
- Made in the USA
- Limited Lifetime Warranty

Universal/Tool-less Mounting - The panel features oblong mounting holes that are compatible with any standard rack hardware. However, the included tool-less clips make installation a breeze with any universal cage nut style rail.

Rounded Corners - The rounded corners and durable powder coat finish provide a smooth edge for safe handling and installation.

Proper Airflow - Using spacer blanks to fill the gaps and openings throughout your rack installation is especially important if thermal management is a concern. Not only will the filler panels prevent unwanted debris, such as dust, from getting in, but it will also prevent hot air from being recirculated into your equipment.

Professional Look - Installing filler panels in the unused rackmount spaces (RMS) gives your overall installation a clean and organized appearance.

Added Support - Spacer Blanks/Filler Panels help support rack rails and can even help shore up a server rack or cabinet. The Flanged Spacer Blanks feature a 1/2" flange on the top and bottom to also help increase the strength of the panel.

FLANGED SPACER BLANKS

Product Name	1U Flanged Spacer Blank	2U Flanged Spacer Blank	3U Flanged Spacer Blank	4U Flanged Spacer Blank	6U Flanged Spacer Blank
Width	19"	19"	19"	19"	19"
Depth	0.5"	0.5"	0.5"	0.5"	0.5"
Height	1.72"	3.47"	5.22"	6.97"	10.47"
Weight	1.5 lbs.	2 lbs.	3 lbs.	3.5 lbs.	4.5 lbs.
SKU	1901-1-001-01	1901-1-002-02	1901-1-003-03	1901-1-004-04	1901-1-006-06

FLAT SPACER BLANKS

Product Name	1U Flat Spacer Blank	2U Flat Spacer Blank	3U Flat Spacer Blank	4U Flat Spacer Blank	6U Flat Spacer Blank
Width	19"	19"	19"	19"	19"
Depth	0.06"	0.06"	0.06"	0.06"	0.06"
Height	1.72"	3.47"	5.22"	6.97"	10.47"
Weight	1.5 lbs.	2 lbs.	3 lbs.	3.5 lbs.	4.5 lbs.
SKU	1901-1-101-01	1901-1-101-02	1901-1-101-03	1901-1-101-04	1901-1-101-06

CANTILEVER RACK SHELVES



CANTILEVER RACK SHELVES

Kendall Howard has a diverse line of rackmount shelves. We offer cantilever, or 2-post, rack shelves in multiple styles, sizes, and weight capacities to suit your needs. Whether you need a solid, vented, heavy duty, medium duty, or light duty shelf, Kendall Howard has the shelf you need in stock and ready to ship.

FEATURES

- Heavy Duty, Medium Duty, Light Duty shelves available
- Choose from solid and vented shelves
- 19" EIA 310-D compliant
- Made in the USA
- Limited Lifetime Warranty (Light Duty: 5-Year Limited Warranty)

Two-Point Mounting - Cantilever rack shelves are perfect for use in 2-post racks, wall mount racks, and cabinets

Easy to Install - Each U space features four mounting holes. These mounting holes can be used with rack screws (and cage nuts if needed) to easily install a tapped or cage nut style mounting rails.

HEAVY DUTY

The heavy duty component shelves take on a lot of weight for their size, and are perfect for supporting heavier equipment such as UPS's and batteries. Heavy duty shelves come in four depths, and both solid and vented styles are available.

FEATURES

- Single and double packs available (Does not apply to 1U 5" Component Shelf)
- 12", 14" or 16" depth
- 19" EIA 310-D compliant
- Made in the USA
- Limited Lifetime Warranty



Product Name	1U 5" Component Shelf	1U 12" Component Shelf	1U 12" Vented Component Shelf	2U 14" Component Shelf	3U 16" Component Shelf
Width	19"	19"	19"	19"	19"
Depth	5"	12"	12"	14"	16"
Height	1.72"	1.72"	1.72"	3.47"	5.22"
Weight Capacity	15 lbs.	70 lbs.	70 lbs.	120 lbs.	150 lbs.
SKU	1906-1-011-01	1906-1-001-01	1906-1-201-01	1906-1-002-02	1906-1-003-03
SKU - 2 Pack	NA	1906-3-201-01	1906-3-221-01	1906-3-202-02	1906-3-203-03

MEDIUM DUTY

Medium duty eco shelves will support monitors, switches, and lighter audio/visual equipment. The vented shelves help maintain proper air circulation in your racks and cabinets.

FEATURES

- Single and double packs available
- 14" depth
- 50 lb. weight capacity
- Venting pattern allows for maximum air flow
- 19" EIA 310-D compliant
- Made in the USA
- Limited Lifetime Warranty



Product Name	2U 14" Vented Eco Shelf	2U 14" (2 pack) Vented Eco Shelf
Width	19"	19"
Depth	14"	14"
Height	3.47"	3.47"
Weight	6 lbs.	11 lbs.
SKU	1906-1-010-02	1906-3-222-02

LIGHT DUTY

LINIER® value line shelves are well-suited for lightweight hubs, routers, and other light equipment. Choose from either the solid or vented LINIER® value line shelf.

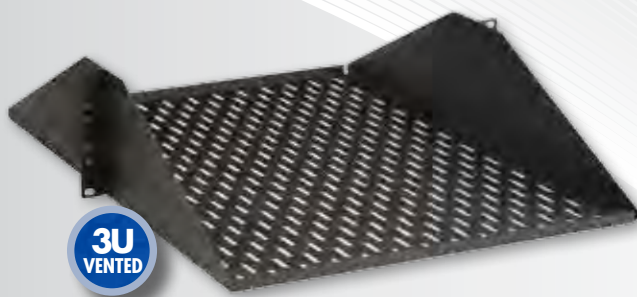
FEATURES

- Economical shelf
- 12" or 14.75" deep
- 25 lb. weight capacity
- 19" EIA 310-D compliant
- Made in the USA
- 5-Year Limited Warranty



Product Name	2U 12" Economy Rack Shelf	2U 12" Vented Economy Rack Shelf	2U 14.75" Economy Rack Shelf	2U 14.75" Vented Economy Rack Shelf
Width	19"	19"	19"	19"
Depth	12.112"	12.112"	14.75"	14.75"
Height	3.47"	3.47"	3.47"	3.47"
Weight	4.5 lbs.	5 lbs.	5.5 lbs.	5.5 lbs.
SKU	3000-1-002-02	3000-1-102-02	3000-1-003-02	3000-1-103-02

CENTERLINE SHELVES



CENTERLINE SHELVES

The Kendall Howard Centerline Shelf is one of the strongest, most stable shelves on the market. Unlike most center mount shelves which may teeter, the Kendall Howard Centerline shelf is rock solid! The heavy gauge steel construction and welded mounting flanges give this shelf unprecedented stability and strength.

FEATURES

- 350 lb. weight capacity
- 24" depth
- Four mounting holes per U space
- 19" EIA 310-D compliant
- Made in the USA
- Limited Lifetime Warranty

Center Mount Style - When mounting equipment in a 2-post rack, weight distribution is always a concern. The Centerline Shelf provides a 24" depth surface that evenly distributes the weight across each side of the rack.

Easy to Install - 19" EIA mounting flanges easily mount to any 19" 2-post relay rack with rack screws.

Rounded Corners - It may be a small detail, but at Kendall Howard we think it's important. It is for that reason that all corners and edges of the Centerline Shelf are rounded for safe handling.

Ventilation - The fully vented shelf base allows for maximum air flow to prevent valuable equipment from overheating. (Only applies to vented shelf)

	3U Solid	3U Vented
Product Name	Centerline Shelf	Centerline Shelf
Width	19"	19"
Depth	24"	24"
Height	5.22"	5.22"
Shipping Method	Small Package	Small Package
Color	Black Powder Coated Finish	Black Powder Coated Finish
Warranty	Limited Lifetime Warranty	Limited Lifetime Warranty
SKU	1907-3-001-03	1907-3-000-03

COMPANION
PRODUCT

RACK SCREWS
... SEE PAGE 56



2-PIECE TELCO RACK SHELF



2-PIECE TELCO RACK SHELF

The Kendall Howard 2-Piece Telco Rack Shelf is designed to complement any 2-post rack. The unique design includes two separate 2U shelves that can be mounted on either side of a relay rack. Providing a 22" deep surface for supporting non-rackmountable devices, the 2-Piece Telco Rack Shelf is a spacious and sturdy shelving solution.

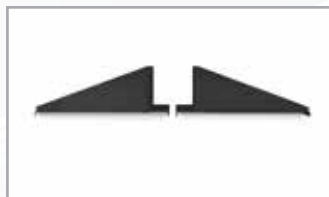
FEATURES

- 200 lb. weight capacity
- 22" deep
- Includes two shelves
- Four mounting holes per U space
- 19" EIA 310-D compliant
- Made in the USA
- Limited Lifetime Warranty

2-Piece Center Mount Design - Each 2U shelf can be mounted to either side of a 2-post rack. This 2-piece design provides a stronger more durable center mount solution.

Quality Manufacturing - Heavy gauge steel and multiple strengthening flanges give this relay rack shelf a healthy 200 lb. weight capacity. The shelf is then finished with a textured powder coat to protect from scratches, abrasions, and more.

Rounded Corners - Rounded corners and edges prevent damage to installed components and/or injury to installers.



Side view



Top view

COMPANION
PRODUCT

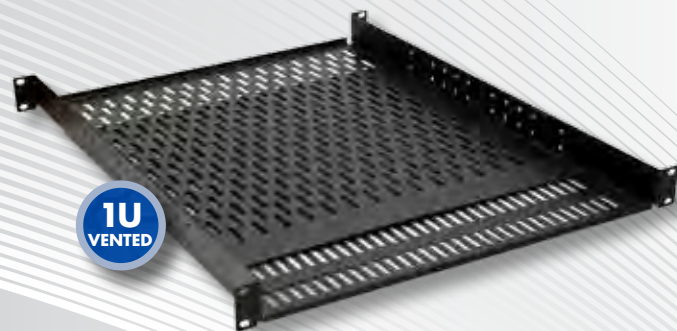
2-POST ECO
RACK

... SEE PAGE 22

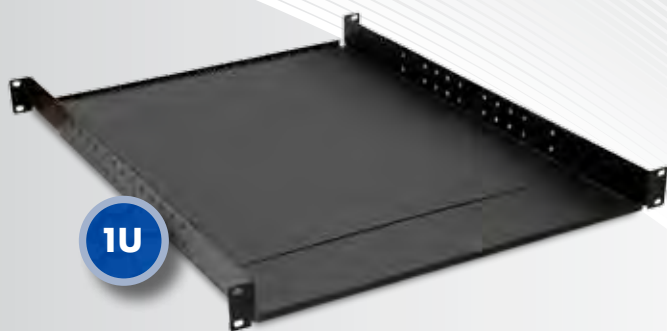


	2U
Product Name	2-Piece Telco Rack Shelf
Width	19"
Depth	9"
Height	3.47"
Shipping Method	Small Package
Color	Black Powder Coated Finish
Warranty	Limited Lifetime Warranty
SKU	1906-3-300-02

4-POINT ADJUSTABLE SHELVES



1U
VENTED



1U

4-POINT ADJUSTABLE SHELVES

The Kendall Howard 4-Point Adjustable Shelf is the perfect addition to any 4-post rack or cabinet. The split design allows the shelf to be adjusted from either 22" to 36" or 22" to 40" depending on whether you choose the solid or vented style. Save yourself the time and frustration of trying to find a rack shelf to fit a specific depth, and let this versatile solution meet all your shelving needs.

FEATURES

- 250 lb. weight capacity
- 19" EIA 310-D compliant
- Made in the USA
- Limited Lifetime Warranty

Adjustable Depth - Telescoping rack shelf is comprised of two separate sections. The two sections can be slid in and out to the desired depth and secured with included hardware.

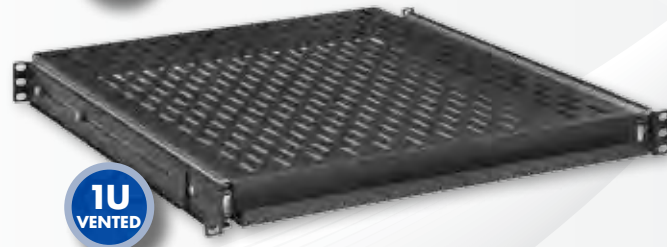
4-Point Mounting - Adjustable depth shelf is designed to be mounted to the front and rear rack rails. 4-point mounting is highly recommended for supporting large, heavy devices such as servers and battery backups.

Heavy Duty - Made from heavy gauge steel and finished with a black textured powder coat for a quality shelf that can support up to 250 lbs.

Rounded Corners - Rounded corners reduce the risk of damage from sharp edges to your devices, cabling, and/or hands.

	1U	2U	1U Vented
Product Name	4-Point Adjustable Shelf	4-Point Adjustable Shelf	4-Point Adjustable Shelf
Width	19"	19"	19"
Depth	Adjustable: 22" - 40"	Adjustable: 22" - 40"	Adjustable: 22" - 36"
Height	1.72"	3.47"	1.72"
Shipping Method	Small Package	Small Package	Small Package
Color	Black Powder Coated Finish	Black Powder Coated Finish	Black Powder Coated Finish
Warranty	Limited Lifetime Warranty	Limited Lifetime Warranty	Limited Lifetime Warranty
SKU	1906-3-007-01	1906-3-006-02	1906-3-008-01

SLIDING RACK SHELVES/20" FIXED RACK SHELF



20" RACKMOUNTABLE SLIDING SHELVES

Kendall Howard manufactures and stocks two models of our sliding rack shelves (solid and vented), each holding up to a 100 lbs. Our sliding rack shelves are perfect for servers, keyboards, KVMs, switches, or any other component that you want the ability to slide out for convenient rear access. The built-in front lip makes sliding the shelf in and out easy, and the 4-point adjustable mounting make this sliding rack shelf a smart addition to any network rack or cabinet.

FEATURES

- Easy to install
- 100 lb. weight capacity
- Mounting depth adjusts from 19" to 28"
- 17.72" maximum slide extension
- 20" depth
- 19" EIA 310-D compliant
- Made in the USA
- Limited Lifetime Warranty

Adjustable Mounting Depth - The sliding shelf can be mounted in 4-post racks and cabinets with various depths. The 4-point mounting style can adjust from 19" to 28" deep to suit your particular network racking solution.

18" Extension - The ball-bearing rail extension smoothly slides out 18" to easily access the back of components and devices.

Solid Sliding Shelf - The innovative design allows the shelf to be flipped over and used as a small rackmountable drawer if necessary.

Vented Sliding Shelf - The vented pattern allows for maximum air flow which is especially helpful for heat generating equipment.

Product Name	1U 20" Rackmountable Sliding Shelf	1U 20" Vented Rackmountable Sliding Shelf
Width	19"	19"
Depth	Adjustable: 19" - 28"	Adjustable: 19" - 28"
Height	1.72"	1.72"
Shipping Method	Small Package	Small Package
Color	Black Powder Coated Finish	Black Powder Coated Finish
Warranty	Limited Lifetime Warranty	Limited Lifetime Warranty
SKU	1922-3-300-01	1922-3-400-01



20" FIXED RACK SHELF

The Kendall Howard 20" Fixed Rack Shelf was designed to complement our Portable Modular Rack Systems. The solid, 4-point shelf is perfect for supporting non-rackmountable IT equipment such as UPS's, servers, routers, hubs, and more.

FEATURES

- Fixed 20" mounting depth
- Low profile design
- 300 lb. weight capacity
- 19" EIA 310-D compliant
- Made in the USA
- Limited Lifetime Warranty

4-Point Design - The 4-point design allows this rack shelf to be mounted on both the front and rear rails for maximum strength and stability.

Slim Profile - Taking up just the bottom portion of a U space, this shelf doesn't sacrifice strength for its slender profile.

Heavy Duty - Just like the Kendall Howard Portable Racks that this shelf was designed for, the heavy duty construction can easily support up to 300 lbs.

Product Name	20" Fixed Rack Shelf
Width	19"
Depth	20.02"
Height	.47"
Shipping Method	Small Package
Color	Black Powder Coated Finish
Warranty	Limited Lifetime Warranty
SKU	1904-1-001-01

RACKMOUNT KEYBOARD TRAYS



RACKMOUNT KEYBOARD TRAYS

Commercial, military, aerospace, corporate, and small office applications alike, the Kendall Howard Rackmount Keyboard Tray will complement them all. This heavy duty design is one of the most robust pull-out keyboard trays on the market. Don't be fooled by its sleek, low profile appearance. This keyboard tray was built to last. The keyboard and touchpad mouse simply slide out when needed to provide quick and easy access to your network.

FEATURES

- Slim 1U design
- Lockable
- 2-post or 4-post mounting
- 19" EIA 310-D compliant
- Made in the USA
- 1-Year Limited Warranty

Space Saver - The slim 1U 19" EIA compliant design requires very little of your expensive network real estate.

Locking Tray - The locking feature keeps the keyboard tray securely closed, even in a mobile rack application. If controlled access is a concern, mount the keyboard tray just below a shelf or network device. This will prevent unauthorized use unless the drawer is unlocked and pulled out.

Ball Bearing Slides - The heavy duty ball bearing slides provide a smooth transition between the keyboard tray's open and closed position.

Keyboard and Mouse - The keyboard tray includes a 107 key QWERTY keyboard with a built-in touchpad mouse. With a single USB cable, it is compatible with Windows 98, ME, XP, Vista, Windows 7, and Windows 8.

Inset Handle - Having a handle that sticks out of the front of the keyboard tray can prohibit you from being able to install it into racks and enclosures that have front doors. The inset handle on the Kendall Howard Keyboard Tray gives you the flexibility to install it in just about any type of rack, cabinet, and enclosure.

Cable Management - The keyboard and mouse's single USB cable is securely fastened to the base of the keyboard tray. This will prevent the cable from being damaged while the keyboard tray slides in and out of position.

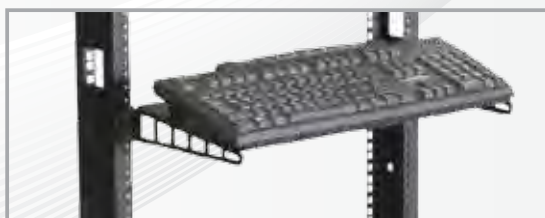
Optional Extension Kit - You ordered the 2-Post Keyboard Tray and now you need the 4-Post version? No problem! With the optional Rackmount Keyboard Tray Extension Kit you can quickly convert your 2-Post Keyboard Tray to a 4-Post Keyboard Tray.

Product Name	1U 2-Post Rackmount Keyboard Tray	1U 4-Post Rackmount Keyboard Tray	Extension Kit Rackmount Keyboard Tray Extension Kit
Width	18.97"	18.97"	2.30"
Depth	16.50"	Adjustable 20" - 36.61"	19.25"
Height	1.72"	1.72"	1.72"
Shipping Method	Small Package	Small Package	Small Package
Color	Black Powder Coated Finish	Black Powder Coated Finish	Black Powder Coated Finish
Warranty	1-Year Limited Warranty	1-Year Limited Warranty	1-Year Limited Warranty
SKU	1910-3-002-01	1910-3-003-01	1910-3-004-01

STATIONARY KEYBOARD TRAY



1U



Shown with 2-Post Eco Rack
- see page 22

STATIONARY KEYBOARD TRAY

The Kendall Howard Stationary Keyboard Tray is a great way to support a keyboard in any 19" EIA compliant rack system. Easy to install, lightweight, and space-efficient, this keyboard tray allows for easy access to your keyboard.

FEATURES

- Slim 1U design
- Rounded corners
- 19" EIA 310-D compliant
- Made in the USA
- Limited Lifetime Warranty

Functional Design - The simplistic design provides a quick and effortless solution for rack systems which need to provide space for a keyboard. The angled shelf supports any standard keyboard in a comfortable position for users.

Rounded Corners - The rounded corners and textured powder coated finish help to eliminate accidental injury or damage to installers, users, and surrounding equipment.

Easy to Install - The slim 1U profile can be installed using rack screws (and cage nuts if needed) into modular racks, 4-post racks, 2-post racks, and more.

	1U
Product Name	Stationary Keyboard Tray
Width	19"
Depth	8"
Height	1.72"
Shipping Method	Small Package
Color	Black Powder Coated Finish
Warranty	Limited Lifetime Warranty
SKU	1910-1-001-01

COMPANION PRODUCTS

2-POST ECO RACK

... SEE PAGE 22

PORTABLE RACKS

... SEE PAGE 26



RACKMOUNT DRAWERS

4U



RACKMOUNT DRAWERS

The Kendall Howard Rackmount Drawer provides a secure space within your rack or cabinet for storing files, electronics, software, cables, testers, and more. By storing equipment within the rack, you'll save time running back and forth to retrieve it. Kendall Howard Rackmount Drawers include a built-in lock and have a maximum load capacity of 100 lbs.

FEATURES

- 100 lb. weight capacity
- 19" EIA 310-D compliant
- Smooth ball bearing slides
- Made in the USA
- Limited Lifetime Warranty

Heavy Duty - The heavy gauge steel construction and attention to detail make this rackmount drawer capable of holding up to 100 lbs. Not only can you utilize the drawer but the top cover can double as a shelf for supporting more equipment.

Full Extension Ball Bearing Slides - The smooth ball bearing slides allow the drawer to be slid in and out with ease.

Four Mounting Holes Per U Space - Each rackmount space (U space) features four mounting holes so that the drawer can be securely installed. To maintain the maximum weight capacity, we suggest installing rack screws through every hole.

2U



3U



4U



COMPANION
PRODUCT

KNOCKDOWN
4-POST OPEN
FRAME RACK

... SEE PAGE 25



Product Name	2U Rackmount Drawer	3U Rackmount Drawer	4U Rackmount Drawer
Width	19"	19"	19"
Depth	16.07"	16.07"	16.07"
Height	3.47"	5.22"	6.97"
Shipping Method	Small Package	Small Package	Small Package
Color	Black Powder Coated Finish	Black Powder Coated Finish	Black Powder Coated Finish
Warranty	Limited Lifetime Warranty	Limited Lifetime Warranty	Limited Lifetime Warranty
SKU	1922-3-100-02	1922-3-100-03	1922-3-100-04

115
CFMHigh Speed Fan
Assembly Kit78
CFM

Fan Assembly Kit

Product Name	High Speed Fan Assembly Kit	Fan Assembly Kit
Width	4.69"	4.7"
Depth	4.69"	4.7"
Height	1.52"	0.984"
Shipping Method	Small Package	Small Package
Color	Black	Black
Warranty	1-Year Limited Warranty	1-Year Limited Warranty
SKU	1908-4-001-01	1908-3-001-01

FAN ASSEMBLY KITS

The Kendall Howard Fan Assembly Kit helps to remove ambient heat that rackmount components can emit. Circulating new air into a wall mount cabinet or server enclosure helps to maintain the optimal temperature for devices such as servers and battery backups.

FEATURES

- Ball bearing design
- Two speeds/cfm to choose from
- Impedance protected
- RoHS compliant
- Includes power cord, fan guard, and installation hardware
- 1-Year Limited Warranty

All-in-One - The Fan Assembly Kit comes complete with one fan, one protective grate, one 6 ft. NEMA 1-15 power cord, and all installation hardware.

Easy to Install - The Kendall Howard Fan Assembly Kit is a snap to install. Simply use the included hardware to screw into place. The fan also includes air flow and rotation guides to ensure proper installation.

Compatibility - The standard 4" fan complements all Kendall Howard cabinets and enclosures. Whether you need to cool a wall mount cabinet, full size enclosure, DVR lock box or training table cable management enclosure, this fan assembly kit will get the job done.

Optional Grounding - Fan features two threaded grounding holes should you need to ground the fan for your particular installation.



TRIPLE FAN PANEL

The Kendall Howard Triple Fan Panel combines three 115 CFM fans, which together move 345 cubic feet of air per minute. By installing the Triple Fan Panel into your network configuration, you can ensure that the heat produced by your device will be properly and efficiently dissipated, resulting in a cooler environment within your cabinet.

FEATURES

- Includes three 115V/115 CFM Fans
- Includes a 3-tail power cord
- Impedance protected
- 19" EIA 310-D compliant
- RoHS compliant
- 1-Year Limited Warranty

Pre-Assembled - The three 115 CFM high speed fans are pre-installed into a 3U heavy gauge steel panel to provide an out-of-the-box solution. The vented steel panel allows air to move through it with ease while also providing a protective barrier over the face of the fan.

Easy to Install - Rackmountable panel easily mounts in any 19" EIA compliant rack or cabinet. Simply mount using rack screws (and cage nuts if needed) and plug it in to start moving air within your rack configuration.

Specially Designed Power Cord - The Triple Fan Panel includes a 3-tail power cord. This cable supplies power to all three fans by only using one outlet of your rackmountable UPS or power strip.

Optional Grounding - Each cooling fan features two threaded ground holes for grounding each fan in installations where specific electrical or network configurations require it.

Product Name	3U Triple Fan Panel
Width	19"
Depth	1.06"
Height	5.22"
Shipping Method	Small Package
Color	Black
Warranty	1-Year Limited Warranty
SKU	1908-3-001-02

LINIER® VERTICAL RAIL KITS

LINIER® VERTICAL RAIL KITS

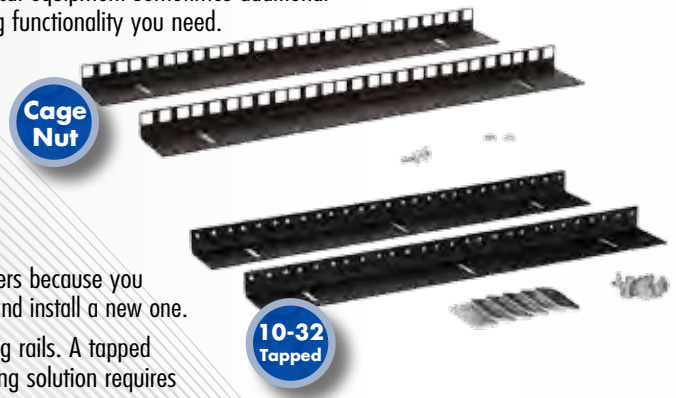
The LINIER® Vertical Rail Kits give installers the ability to integrate additional cage nut style or 10-32 tapped mounting solutions into a LINIER® cabinet. When installing network, security or low-voltage electrical equipment sometimes additional mounting points are required. This additional set of rails will provide the added mounting functionality you need.

FEATURES

- Fully adjustable
- Includes two cage nut style rails or two 10-32 tapped rails
- Installation hardware included (rack screws and cage nuts sold separately)
- Made in the USA
- 5-Year Limited Warranty

Cage Nut Style Rails - Cage nut style rails are becoming more popular with installers because you do not have to worry about stripping holes. If a cage nut is stripped, you simply remove it and install a new one.

10-32 Tapped Rails - Many installers enjoy the convenience of pre-tapped mounting rails. A tapped mounting rail features holes that contain internal threads. The 10-32 tapped rail mounting solution requires less hardware and less installation time.



LINIER® WALL MOUNT RAIL KITS SEE PAGES 14-17 FOR LINIER® WALL MOUNT CABINETS

CAGE NUT	Product Name	6U LINIER® Wall Mount Vertical Rail Kit – Cage Nut	9U LINIER® Wall Mount Vertical Rail Kit – Cage Nut	12U LINIER® Wall Mount Vertical Rail Kit – Cage Nut	15U LINIER® Wall Mount Vertical Rail Kit – Cage Nut	18U LINIER® Wall Mount Vertical Rail Kit – Cage Nut	22U LINIER® Wall Mount Vertical Rail Kit – Cage Nut
	Width	.912"	.912"	.912"	.912"	.912"	.912"
	Depth	2"	2"	2"	2"	2"	2"
	Height	10.5"	15.75"	21"	26.25"	31.5"	36.75"
	SKU	3150-3-001-06	3150-3-001-09	3150-3-001-12	3150-3-001-15	3150-3-001-18	3150-3-001-22
10-32 TAPPED	Product Name	6U LINIER® Wall Mount Vertical Rail Kit – 10-32 Tapped	9U LINIER® Wall Mount Vertical Rail Kit – 10-32 Tapped	12U LINIER® Wall Mount Vertical Rail Kit – 10-32 Tapped	15U LINIER® Wall Mount Vertical Rail Kit – 10-32 Tapped	18U LINIER® Wall Mount Vertical Rail Kit – 10-32 Tapped	22U LINIER® Wall Mount Vertical Rail Kit – 10-32 Tapped
	Width	.912"	.912"	.912"	.912"	.912"	.912"
	Depth	2"	2"	2"	2"	2"	2"
	Height	10.5"	15.75"	21"	26.25"	31.5"	36.75"
	SKU	3150-3-002-06	3150-3-002-09	3150-3-002-12	3150-3-002-15	3150-3-002-18	3150-3-002-22

LINIER® FULL SIZE SERVER CABINET RAIL KITS SEE PAGES 28-33 FOR LINIER® FULL SIZE SERVER CABINETS

CAGE NUT	Product Name	22U LINIER® Server Cabinet Vertical Rail Kit - Cage Nut	27U LINIER® Server Cabinet Vertical Rail Kit - Cage Nut	37U LINIER® Server Cabinet Vertical Rail Kit - Cage Nut	42U LINIER® Server Cabinet Vertical Rail Kit - Cage Nut
	Width	.912"	.912"	.912"	.912"
	Depth	2"	2"	2"	2"
	Height	38.5"	47.25"	64.75"	73.5"
	SKU	3160-3-001-22	3160-3-001-27	3160-3-001-37	3160-3-001-42
10-32 TAPPED	Product Name	22U LINIER® Server Cabinet Vertical Rail Kit - 10-32 Tapped	27U LINIER® Server Cabinet Vertical Rail Kit - 10-32 Tapped	37U LINIER® Server Cabinet Vertical Rail Kit - 10-32 Tapped	42U LINIER® Server Cabinet Vertical Rail Kit - 10-32 Tapped
	Width	.912"	.912"	.912"	.912"
	Depth	2"	2"	2"	2"
	Height	36.75"	47.25"	64.75"	73.5"
	SKU	3160-3-002-22	3160-3-002-27	3160-3-002-37	3160-3-002-42

LINIER® CASTER BASE



Cabinet not included



LINIER® CASTER BASE

The LINIER® Caster Base provides a sturdy, mobile base that is designed for use with any of the LINIER® Fixed Wall Mount Cabinets. The low profile base assembles in less than five minutes and adds only 2.9" to your cabinet. Whether you need a compact rolling cabinet to fit under a desk, or you're short on space and don't want to wall mount the unit, the LINIER® Caster Base in conjunction with a LINIER® Fixed Wall Mount Cabinet provides a cost-conscious, mobile solution.

FEATURES

- To be used with the LINIER® Fixed Wall Mount Cabinets
- 250 lb. weight capacity
- Easy to assemble
- Made in the USA
- 5-Year Limited Warranty

Low Profile Swivel Casters - The 2" dual wheel casters swivel 360 degrees providing easy maneuverability.

Easy to Assemble - The knockdown design reduces shipping costs and takes less than five minutes to assemble.

Polypropylene Wheels - The polypropylene material is perfect for all flooring types as it will not scuff or damage flooring during movement.

Open Design - The large opening in the bottom allows access to the laser knockout in the bottom of the LINIER® Fixed Wall Mount Cabinet. This knockout can be used for cable routing or to install a Fan Assembly Kit.

Product Name	LINIER® Caster Base
Width	23.78"
Depth	23.78"
Height	4.88"
Shipping Method	Small Package
Color	Black Powder Coated Finish
Warranty	5-Year Limited Warranty
SKU	3140-3-001-01

COMPANION PRODUCTS

LINIER® FIXED WALL MOUNT CABINETS

... SEE PAGES 14-15



RACK SCREWS



RACK SCREWS

Kendall Howard Rack Screws are not your everyday hardware store item. These superior, American-made, quality screws should be your only choice for installing rackmount devices such as shelves, cable managers, servers, and other network, A/V, and electronic equipment.

FEATURES

- 0.75" in length
- Phillips truss head
- Packaged in an aluminum tin
- RoHS compliant
- Made in the USA

Dog/Pilot Point - The straight pointed section below the thread helps to self-guide the screw to prevent accidental stripping while also improving the ease of installation.

Phillips Truss Head - Truss head screws can be installed with one of the most universal tools on the market. Requires only a Phillips head screwdriver or bit.

Compatible Rail Systems - Kendall Howard Rack Screws can be utilized in any tapped rail system. They can also be installed in universal cage nut style rails when used in conjunction with cage nuts.

Superior Manufacturing - The hardened steel construction produces a high-quality finish with excellent dimensional stability. We then take it one step further and finish them with a black oxide coating so the screw blends with most standard black network racks, cabinets, and accessories.

RACK SCREWS

Style	10-32		12-24		M5		M6	
Quantity	50 pack	100 pack	50 pack	100 pack	50 pack	100 pack	50 pack	100 pack
SKU	0100-1-001-01	0100-1-002-01	0100-1-001-03	0100-1-002-03	0100-1-001-02	0100-1-002-02	0100-1-001-04	0100-1-002-04

RACK SCREWS WITH WASHERS

Style	10-32		12-24		M5		M6	
Quantity	50 pack	100 pack	50 pack	100 pack	50 pack	100 pack	50 pack	100 pack
SKU	0100-1-011-01	0100-1-012-01	0100-1-011-03	0100-1-012-03	0100-1-011-02	0100-1-012-02	0100-1-011-04	0100-1-012-04

BUY IN BULK AND SAVE!

RACK SCREWS

Style	10-32		12-24		M5		M6	
Quantity	2500 pack	5000 pack	2500 pack	5000 pack	2500 pack	5000 pack	2500 pack	5000 pack
SKU	0100-3-200-01	0100-3-100-01	0100-3-200-03	0100-3-100-03	0100-3-200-02	0100-3-100-02	0100-3-200-04	0100-3-100-04

RACK SCREWS WITH WASHERS

Style	10-32	12-24	M5	M6
Quantity	2500 pack	2500 pack	2500 pack	2500 pack
SKU	0100-3-300-01	0100-3-300-03	0100-3-300-02	0100-3-300-04

CAGE NUTS

Kendall Howard Cage Nuts create a threaded mounting hole for mounting equipment on to universal rack rails commonly found in server enclosures, open frame racks, and wall mount cabinets. Universal mounting rails, also known as cage nut style rails, are the most common and preferred type of rails used on the market today.

FEATURES

- Snap-in design
- Packaged in an aluminum tin
- RoHS compliant
- Made in the USA

Snap-in Design - Captive nut and spring steel cage feature wings that can be compressed to snap into the square holes found in universal panel rails. Unlike slide on cage nuts, this design locks the nut securely in place.

Easily Replaced - Take away the hassle of dealing with stripped holes in tapped rails. If you strip a cage nut they can easily be replaced in the field, saving you time and money.

Choose Your Size - Using universal rack rails and Cage Nuts gives you the flexibility to use whatever size hardware you prefer. You can even use multiple sizes in the same installation. You can use smaller Rack Screws and Cage Nuts for lightweight rack shelves, cable managers, spacer blanks, and larger hardware for heavier equipment such as servers, UPS's, and KVM switches.

Added Strength - The thick material used in manufacturing Cage Nuts provides a stronger, more durable fastening solution.



CAGE NUTS



Style	10-32		12-24		M5		M6	
Quantity	50 pack	100 pack	50 pack	100 pack	50 pack	100 pack	50 pack	100 pack
SKU	0200-1-001-01	0200-1-002-01	0200-1-001-03	0200-1-002-03	0200-1-001-02	0200-1-002-02	0200-1-001-04	0200-1-002-04

BUY IN BULK AND SAVE!

CAGE NUTS



Style	10-32	12-24	M5	M6
Quantity	2500 pack	2500 pack	2500 pack	2500 pack
SKU	0200-1-003-01	0200-1-003-03	0200-1-003-02	0200-1-003-04

MOUNTING KITS / HOOK AND LOOP CABLE TIES



Product Name	Wall Mount Hardware Kit
Width	0.96"
Depth	2"
Height	7.15"
Shipping Method	Small Package
Color	Clear Zinc Finish
Warranty	Limited Lifetime Warranty
SKU	0300-1-001-00

WALL MOUNT HARDWARE KIT

Mounting cabinets and racks doesn't have to be a pain. The Kendall Howard Wall Mount Hardware Kit makes installing wall mount solutions quick and easy. With all the hardware you need to get the job done, the Wall Mount Hardware Kit will have you mounting your cabinets like a pro.

FEATURES

- Phillips head bolts
- Takes ½" drill diameter hole
- Meets Federal Specification Requirements FF-B-588D Type V
- Pre-assembled, ready for use
- Automatically adjusts to wall thickness
- Limited Lifetime Warranty

Easy to Use - With just four toggle anchors, four washers, and four bolts, mounting has never been easier. Just drill a ½" hole in the wall, insert the toggle end of the anchor into the hole, slide the fitting tight against the wall, and snap off the two zip lines. Simply line up the cabinet or rack you are mounting and screw in the bolt.

Endless Applications - The Wall Mount Hardware Kit is ideal for installation into metal studs, drywall, concrete blocks, and stucco. Provides a ¼" pre-threaded hole in which cabinets, racks, shelves, and more can be mounted to.

Reusable - The locking front cap prevents the anchor from falling behind the wall when the bolts are removed so you can use the toggle anchor again and again.



Product Name	Hook and Loop Cable Ties - 10 Pack
Width	8"
Depth	0.05"
Height	1"
Shipping Method	Small Package
Color	Black
Warranty	1-Year Limited Warranty
SKU	0300-1-002-00

HOOK AND LOOP CABLE TIES - 10 PACK

Kendall Howard Hook and Loop Cable Ties are built to provide a secure hold when separating and managing multiple cables to your patch panels, switches or other networking devices. Hook and Loop Cable Ties are reusable and are the preferred choice for many network installers. Unlike traditional cable or zip ties, which can damage the copper or fiber optic cables if pulled too tight, the Hook and Loop Cable Ties are designed to not be over tightened. Do not let its size fool you. Although small and just 8" long, they can be used to bundle trunk cables inside and outside of the rack. Now you can create an organized racking system with the help of these Hook and Loop Cable Ties.

FEATURES

- Quantity: 10
- 0.5" W x 8" L
- Reusable up to 200 uses
- Cable capacity: Approximately 40 network cables
- Made in the USA
- 1-Year Limited Warranty

Reusable - Whether you're organizing, adding or moving cables, these cable ties can be used again and again, for up to 200 uses.

Bundle with Safety - Traditional cable ties are easy to over tighten when bundling cables. If you pull too tight, you risk damaging the fragile copper or glass found in network or fiber optic cables. With Hook and Loop Cable Ties, over tightening your cable bundles is no longer an issue.

RACK HELPER / LINIER® WALL MOUNT COMBINATION LOCK



RACK HELPER

The product that started it all - the Kendall Howard Rack Helper is a truly innovative product. Acting as a second set of hands, the Rack Helper perfectly places and supports network, A/V, and other equipment during installation. This rackmount component makes installing heavy rackmount equipment a snap!

FEATURES

- Huge time-saver
- Easily install heavy equipment
- 200 lb. weight capacity
- Made in the USA
- Limited Lifetime Warranty

Time-Saver - Stop running around looking for someone to hold up your servers, UPS's or other heavy rackmount equipment during installation. Turn your labor intensive installation into an easy one person task with the assistance of the Rack Helper.

Easy to Use - Simply install the Rack Helper in the rack space below the desired location of the heavy device. Next, slide the rackmount component on top of the Rack Helper, and secure using the correct mounting hardware. Then remove the Rack Helper to be used again and again during other installations.

Added Support - Leave the device installed for peace of mind. The Rack Helper can also be used to permanently help support crucial and expensive equipment.

Product Name	2U Rack Helper
Width	19"
Depth	3"
Height	3.5"
Shipping Method	Small Package
Color	Black Powder Coated Finish
Warranty	Limited Lifetime Warranty
SKU	1924-1-001-02



LINIER® WALL MOUNT COMBINATION LOCK

Keep your equipment safe and secure with the Kendall Howard LINIER® Wall Mount Combination Lock. The Combination Lock is designed to be installed in either the LINIER® Fixed or Swing-Out Wall Mount Cabinets. It will replace an existing cylinder lock so there is no need for drilling or modification of the unit. If you forget the four digit combination, don't worry! The LINIER® Wall Mount Combination Lock comes with a key override so you can still access your equipment when you need to. Protect your valuable equipment with the LINIER® Wall Mount Combination Lock.

FEATURES

- Compatible with the LINIER® Fixed and Swing-Out Wall Mount Cabinets
- Accepts a four digit combination
- Made in the USA
- 1-Year Limited Warranty

Secure Lock - The secure design of the Combination Lock makes this a durable accessory to lock your valuable equipment.

Four Digit Code - Combination Lock accepts a four digit combination to lock and protect your equipment.

Key Override - If you forget your four digit combination, use the included set of keys to unlock your door. Then follow the included set of instructions on how to reset the combination.

Product Name	LINIER® Wall Mount Combination Lock
Width	2.647"
Depth	2.408"
Height	1.416"
Shipping Method	Small Package
Color	Black
Warranty	1-Year Limited Warranty
SKU	3200-1-001-00

INTRODUCTION

PC Security

Data and network security is an ongoing necessity — especially in the IT world. Whether you're protecting devices from theft or tampering, or restricting access to private and critical information, you can rely on our line of PC Security products.



PC & LCD Security

PC/LCD Security Stand	62
Thin Client/LCD Wall Mount	63



DVR Security

DVR Security Lock Boxes	64
-------------------------------	----



Payment Device Security

POS Payment Device Stand	65
--------------------------------	----

PC / LCD SECURITY STAND



PC/LCD SECURITY STAND

Kendall Howard's PC/LCD Security Stand is a secure and eye catching unit, making it the perfect solution for applications that require daily use. Its design makes it suitable for educational and corporate organizations that not only want to protect their PC hardware from theft, but also want an aesthetically appealing product. The PC/LCD Security Stand is designed to secure any small form factor desktop and LCD monitor from 15" to 22" deep. This stand is perfect for retail stores, restaurant POS systems, physician offices, and clinics. Securing PCs and LCD monitors has never been so easy.

FEATURES

- Secures PCs and LCDs in small footprint
- Up to 15 degree tilt
- Tamper-proof hardware
- 15" to 22" widescreen monitors
- Made in the USA
- Limited Lifetime Warranty

Appealing Design - The PC/LCD Security Stand is aesthetically appealing and suitable for retail stores, clinics, education centers, corporate organizations, and more.

Additional Security Available - For added security, the PC/LCD Security Stand has specially keyed hardware that is available at no extra charge. To receive the additional security hardware, simply complete the included registration card, send it in, and we will mail the hardware and the security key.



Monitor, computer and accessories not included.

Product Name	PC/LCD Security Stand
Width	10.5" - 15"
Depth	11" - 18"
Height	24"
Shipping Method	Small Package
Color	Gray Powder Coated Finish
Warranty	Limited Lifetime Warranty
SKU	DS-100

THIN CLIENT/LCD WALL MOUNT



Monitor not included.

THIN CLIENT/LCD WALL MOUNT

The Kendall Howard Thin Client/LCD Wall Mount allows installers to mount any VESA compliant LCD monitor (15" to 22") and a thin client to virtually any vertical surface. This is perfect for digital advertising, touch screens, Kiosk interfaces, and much more. The two-piece self-locking unit installs in minutes with an extremely low profile. Depending on the size and make of your monitor, the mounting system has a 15-30 degree tilt up or down. The Thin Client/LCD Wall Mount offers unprecedented venting to ensure your equipment stays cool and operating at peak performance. For added security use a standard padlock to prevent tampering. Add a sleek and professional look to your installation with the Thin Client/LCD Wall Mount.

FEATURES

- Low profile
- Includes mounting screws
- 15 - 30 degree tilt up or down
- Made in the USA
- Limited Lifetime Warranty

Easy to Install - Thin Client/LCD Wall Mount system is easy to install and gives your installation a sleek, professional look.

Tilting Feature - The mounting system has an up and down tilt feature of 15-30 degree to suit your installation.

Product Name	Thin Client/LCD Wall Mount
Width	13.88"
Depth	4.525"
Height	10"
Shipping Method	Small Package
Color	Black Powder Coated Finish
Warranty	Limited Lifetime Warranty
SKU	WMTC-M

DVR SECURITY LOCK BOXES



DVR SECURITY LOCK BOXES

The Kendall Howard DVR Security Lock Boxes safely secure devices such as digital video recorders, sensitive network appliances or even tower computers. Designed to be a desktop or wall mount solution, these secure lock boxes allow you to prevent unauthorized use of your equipment in a variety of environments.

FEATURES

- Heavy duty security enclosure
- 270 degree swing open door
- Made in the USA
- Limited Lifetime Warranty

Ventilation Options - Built-in fan grates allow up to one or two optional fans to be installed. (One fan for the 15" deep box and two fans for the 21" deep box.)

Inset Locking Door - The front locking door swings open 270 degrees for easy access to equipment. The inset hinge and recessed door prevents tampering and reinforces the strength and security of this DVR enclosure.

Heavy Duty Construction - Manufactured from heavy gauge steel, this DVR lock box is one of the strongest and most secure solutions available.

Cable Routing Holes - Top and back cable routing holes allow numerous cables to be fed into the security cabinet to connect or power enclosed devices.

Mounting Options - While the lock box can be set on any surface, it can also be mounted on the wall to free up workspace. If heavy equipment will be installed, we recommend reinforcing the lock box with the optional Wall Mount Bracket Kit.

DVR WALL MOUNT BRACKET KIT



Comes with hardware

SKU 1917-3-002-00

Product Name	21" Depth DVR Security Lock Box	15" Depth DVR Security Lock Box
Width	20"	16"
Depth	21.05"	15"
Height	9"	5.25"
Shipping Method	Small Package	Small Package
Color	Black Powder Coated Finish	Black Powder Coated Finish
Warranty	Limited Lifetime Warranty	Limited Lifetime Warranty
SKU	1917-3-001-00	1917-3-003-00

POS PAYMENT DEVICE STAND

POS PAYMENT DEVICE STAND

The Kendall Howard POS Payment Device Stand offers merchants and consumers a user-friendly mounting system for modular payment devices. The ever-growing use of electronic payment terminals can be seen in industries such as retail, restaurants, hospitality, banking, and even transportation. Designed with these markets in mind, the simple and universal design of the POS Payment Device Stand can be utilized with various transaction stations and in diverse environments.

FEATURES

- 30 degree fixed angle
- Black powder coated steel
- Pre-applied rubber feet
- Made in the USA
- Limited Lifetime Warranty

Simplistic Design - The simple yet reliable construction of this point-of-sale terminal stand provides a clean, professional solution for mounting and displaying modular payment devices.

Versatile VFI Keyhole Pattern - The universal VFI three-hole pattern can accommodate a variety of consumer facing payment machines from manufacturers such as VeriFone, Motorola/Symbol, Ingenico, and Honeywell.

Fixed Angle - The 30 degree tilt of the transaction stand securely positions the payment device at an appropriate angle for easy visibility and usage.

Cable Routing - Cable management cut out accommodates the Ethernet, USB, and electrical cabling that protrudes from the rear of the payment device.

Mobile Solution - The self-supporting display stand does not need to be mounted to a flat surface for stability, allowing it to be moved to suit each user. This is extremely useful in situations where two cash registers may be sharing one credit card payment system.

Product Name	POS Payment Device Stand
Width	5"
Depth	5.668"
Height	3.02"
Shipping Method	Small Package
Color	Black Powder Coated Finish
Warranty	Limited Lifetime Warranty
SKU	2000-3-001-01



INTRODUCTION

Technical Furniture

Add professionalism to any classroom, office, government or military center with our collection of technical furniture. We offer pre-configured and customized solutions to help you turn an outdated space into a respectable atmosphere. Choose from our Training Tables and LAN Stations/ Workbenches to develop a room suitable for you.



Training Tables

Advanced Classroom Training Tables.68-69



LAN Stations/Workbenches

Performance Series® LAN Stations/Workbenches70-71

Performance Series® & Performance Plus® Accessories72-73

Performance Plus® LAN Stations/Workbenches.74-75

ADVANCED CLASSROOM TRAINING TABLES



ADVANCED CLASSROOM TRAINING TABLES

The Kendall Howard Advanced Classroom Training Table (ACTT) Collection balances professionalism and practicality in a truly universal solution. The ACTT system will easily convert an out-dated, uninspiring training room into an engaging, respectable atmosphere by providing a clean, focused learning space that is suitable for any training or work space.

The modular design allows you to customize the layout and usability of your facility, minimizing distractions, and encouraging individuals to stay focused. The ACTT Collection is engineered to be affordable, yet quality driven, giving everyone the opportunity to orchestrate a structured and effective work space.

The fully adjustable leg design allows the surface height to be modified to best suit each user. This capability helps to promote a uniform and professional solution throughout facilities which cater to various age groups, such as schools and community centers. The robust table tops are available in five stunning finishes to help transform any educational facility into a warm and inviting learning space that demands success.

Whether it's a high school classroom or a corporate training center, Kendall Howard's Advanced Classroom Training Tables will dramatically improve a user's overall experience, provide instructors with more fruitful results, and advance your educational facility to the next level.

FOUR WIDTHS! TWO DEPTHS! FIVE COLORS!

Folkstone

Hard Rock
MapleCaramel
AppleSerene
CherryAfrican
Mahogany

WIDTHS	COLORS					
36"	24" Depth	5500-3-000-23	5500-3-001-23	5500-3-002-23	5500-3-003-23	5500-3-004-23
	30" Depth	5500-3-000-33	5500-3-001-33	5500-3-002-33	5500-3-003-33	5500-3-004-33
48"	24" Depth	5500-3-000-24	5500-3-001-24	5500-3-002-24	5500-3-003-24	5500-3-004-24
	30" Depth	5500-3-000-34	5500-3-001-34	5500-3-002-34	5500-3-003-34	5500-3-004-34
60"	24" Depth	5500-3-000-25	5500-3-001-25	5500-3-002-25	5500-3-003-25	5500-3-004-25
	30" Depth	5500-3-000-35	5500-3-001-35	5500-3-002-35	5500-3-003-35	5500-3-004-35
72"	24" Depth	5500-3-000-26	5500-3-001-26	5500-3-002-26	5500-3-003-26	5500-3-004-26
	30" Depth	5500-3-000-36	5500-3-001-36	5500-3-002-36	5500-3-003-36	5500-3-004-36

FOUR WIDTHS:

36"



48"



60"

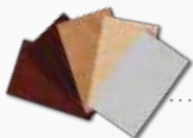


72"



• **Choose from five Stunning Finishes**

- Folkstone
- Hard Rock Maple
- Caramel Apple
- Serene Cherry
- African Mahogany



- **Optional Power/Data Conversion**
Kit provides easy access to power and data connections from the work surface.

SKU: 5500-3-100-01



- **Included Cable Access Port** Provides an in-desk cable management solution.



- **Optional Ganging Kit** Secure multiple training tables together to reduce accidental movement and displacement.

SKU: 5500-3-100-00

- **Size Options** Two depths (24" and 30") and four widths (36", 48", 60" and 72") available.

• **Adjustable Height**

Standard leg kit allows you to adjust the height from 28" to 35".



• **Optional CPU Holder**

The universal design allows you to mount on either the inside or outside of the table leg.

SKU: 4" width 5500-3-100-04

SKU: 8" width 5500-3-100-08



• **Optional Keyboard Tray/Pencil Drawer**

Sliding keyboard tray can also be flipped upside down and utilized as a pencil drawer.

SKU: 5500-3-100-02



• **Optional Locking Caster Kit**

Allows training tables to be moved around easily, perfect for impromptu group exercises or projects.

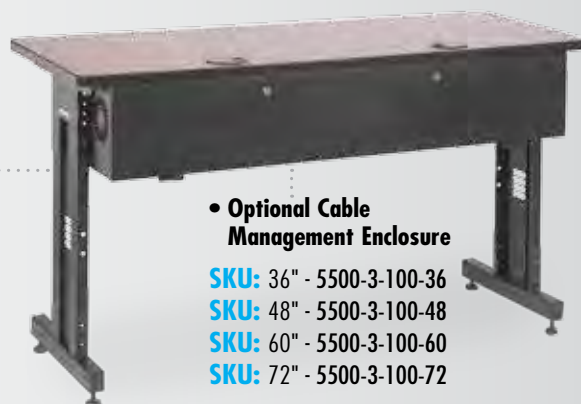
SKU: 5500-3-100-03



Lockable enclosure manages and hides cables while providing a space to house electrical or network devices.

Included fan pattern allows for easy installation of a fan kit, providing additional airflow.

(See page 53 for fans.)



• **Optional Cable Management Enclosure**

SKU: 36" - 5500-3-100-36

SKU: 48" - 5500-3-100-48

SKU: 60" - 5500-3-100-60

SKU: 72" - 5500-3-100-72

PERFORMANCE SERIES® LAN STATIONS/WORKBENCHES

PERFORMANCE SERIES® LAN STATIONS/WORKBENCHES

The Kendall Howard Performance Series® LAN Stations/Workbenches are top of the line in quality and versatility. Our systems are completely modular, allowing you to design virtually any layout suitable for your environment. The built-in cable management channel keeps network cables and power cords organized. Performance Series® LAN Stations/Workbenches are available with various upper and lower shelving options to help you create the workstation you need. All work surfaces are supported with heavy duty steel supports, making the Performance Series® LAN Stations/Workbenches one of the strongest benches on the market today.

- Shown with optional casters (casters sold separately)
- Available sizes: 24", 48", 72", 96", and Corner
- Universal preset accessory mounting holes
- Assembles in approximately one hour
- Adjust upper shelving to any increment (only applies to 100, 200, and corner series)
- Weight capacity: 1,000 lbs.
- Made in the USA
- Limited Lifetime Warranty



Computers, monitors and accessories not included.
Shown with optional casters and other accessories.

Performance Series® LAN Stations/ Workbenches have many uses including:

- Tech benches
- Network labs
- Assembly benches
- Shipping stations
- Security/command consoles
- Computer repair benches
- Home office



Shown with optional casters.

Includes two upper shelves
and one ½ bottom shelf.



Shown with optional casters.

Includes two upper shelves
and one full bottom shelf.



Shown with optional casters.

Includes one full bottom shelf.

All series
available in five
stunning finishes!

Folkstone

Hard Rock
Maple

Caramel
Apple

Serene
Cherry

African
Mahogany

Size	Series	Dimensions	FINISHES				
			Folkstone	Hard Rock Maple	Caramel Apple	Serene Cherry	African Mahogany
24"	100	24" W x 30" D x 74" H	5000-3-100-24	5000-3-101-24	5000-3-102-24	5000-3-103-24	5000-3-104-24
	200	24" W x 30" D x 74" H	5000-3-200-24	5000-3-201-24	5000-3-202-24	5000-3-203-24	5000-3-204-24
	300	24" W x 30" D x 30" H	5000-3-300-24	5000-3-301-24	5000-3-302-24	5000-3-303-24	5000-3-304-24
	400	24" W x 30" D x 30" H	5000-3-400-24	5000-3-401-24	5000-3-402-24	5000-3-403-24	5000-3-404-24
48"	100	48" W x 30" D x 74" H	5000-3-100-48	5000-3-101-48	5000-3-102-48	5000-3-103-48	5000-3-104-48
	200	48" W x 30" D x 74" H	5000-3-200-48	5000-3-201-48	5000-3-202-48	5000-3-203-48	5000-3-204-48
	300	48" W x 30" D x 30" H	5000-3-300-48	5000-3-301-48	5000-3-302-48	5000-3-303-48	5000-3-304-48
	400	48" W x 30" D x 30" H	5000-3-400-48	5000-3-401-48	5000-3-402-48	5000-3-403-48	5000-3-404-48
72"	100	72" W x 30" D x 74" H	5000-3-100-72	5000-3-101-72	5000-3-102-72	5000-3-103-72	5000-3-104-72
	200	72" W x 30" D x 74" H	5000-3-200-72	5000-3-201-72	5000-3-202-72	5000-3-203-72	5000-3-204-72
	300	72" W x 30" D x 30" H	5000-3-300-72	5000-3-301-72	5000-3-302-72	5000-3-303-72	5000-3-304-72
	400	72" W x 30" D x 30" H	5000-3-400-72	5000-3-401-72	5000-3-402-72	5000-3-403-72	5000-3-404-72
96"	100	96" W x 30" D x 74" H	5000-3-100-96	5000-3-101-96	5000-3-102-96	5000-3-103-96	5000-3-104-96
	200	96" W x 30" D x 74" H	5000-3-200-96	5000-3-201-96	5000-3-202-96	5000-3-203-96	5000-3-204-96
	300	96" W x 30" D x 30" H	5000-3-300-96	5000-3-301-96	5000-3-302-96	5000-3-303-96	5000-3-304-96
	400	96" W x 30" D x 30" H	5000-3-400-96	5000-3-401-96	5000-3-402-96	5000-3-403-96	5000-3-404-96
CR	Corner	50" W x 50" D x 74" H	5000-3-100-CR	5000-3-101-CR	5000-3-102-CR	5000-3-103-CR	5000-3-104-CR

400
Series

Includes one ½ bottom shelf.

CORNER
Series

Includes two upper shelves.

Kendall Howard LAN Stations/Workbenches ship flat in completely enclosed crates to ensure that your products make it safely to your door.

Numerous features available for each Performance Series® LAN Station/Workbench.



Cable trays are built into the frame to keep wiring out of the way.



Upright beams allow you to channel cables from floor to upper shelving to ceiling.



All work surfaces are supported with heavy duty steel supports.



Mounting and adjusting shelves is easy with our mounting hardware.

PERFORMANCE SERIES® & PERFORMANCE PLUS® ACCESSORIES

ONLY COMPATIBLE WITH PERFORMANCE SERIES®

GANGING BRACKET KIT

Designed to gang and secure two Performance Series® Workbenches together. For use with 100 and 200 series.



Product Name	Ganging Bracket Kit
Dimensions	5.4" W x 9.25" D x 1.46" H
SKU	5200-3-580-00

LAN STATION UTILITY DRAWER

The LAN Station Utility Drawer easily mounts under the work surface. This drawer is great for tools, office supplies or anything that you need to store out of sight. Five colors available.



Dimensions	20.63" W x 17" D x 6.38" H
SKU - Folkstone	5200-3-201-00
SKU - Hard Rock Maple	5200-3-202-00
SKU - Caramel Apple	5200-3-203-00
SKU - Serene Cherry	5200-3-204-00
SKU - African Mahogany	5200-3-205-00

PERFORMANCE ROLLOUT CART

The Kendall Howard Performance Rollout Cart makes it easy to store heavy equipment below the work surface and allows instant access. Performance Rollout Carts are designed to work with the 100 series and 400 Series Performance Series® LAN Stations/Workbenches.



Product Name	Performance Rollout Cart
Dimensions	43" W x 26.75" D x 3.9" H
SKU	5200-3-300-00

ACCESSORY BARS

- Installs in minutes
- Mount LCD monitors
- Attach power strips
- Adjusts to any height
- Made in the USA
- Limited Lifetime Warranty



The Kendall Howard Accessory Bars are designed to work with the Performance Series® and Performance Plus® lines of technical furniture. With Accessory Bars, it is possible to easily mount the LCD Monitor Mounts and Power Strips. The Accessory Bar adjusts to any height, and works as a cable lacing bar as well.

PERFORMANCE SERIES®

Product Name	Performance 24" Accessory Bar	Performance 48" Accessory Bar	Performance 72" Accessory Bar	Performance 96" Accessory Bar	Performance Corner Accessory Bar
Width	24"	48"	72"	96"	49"
Depth	2"	2"	2"	2"	2"
Height	2.91"	2.91"	2.91"	2.91"	2.91"
SKU	5200-3-500-24	5200-3-500-48	5200-3-500-72	5200-3-500-96	5200-3-500-CR

PERFORMANCE PLUS®

Product Name	Performance Plus® 36" Accessory Bar Kit	Performance Plus® 48" Accessory Bar Kit	Performance Plus® 60" Accessory Bar Kit	Performance Plus® 72" Accessory Bar Kit	Performance Plus® Corner Accessory Bar Kit
Width	36"	48"	60"	72"	56"
Depth	2.16"	2.16"	2.16"	2.16"	2.16"
Height	2.54"	2.54"	2.54"	2.54"	2.54"
SKU	7000-3-536-00	7000-3-548-00	7000-3-560-00	7000-3-572-00	7000-3-5CR-00

48" POWER STRIP

- 14 ft. power cord
- 1,060 Joules Surge Protection
- 400 volt clamping voltage
- 16 evenly spaced outlets
- 15 amp circuit breaker
- UL Approved
- 1-Year Limited Warranty



The Kendall Howard Power Strip combines state-of-the-art electronics protection with a basic but attractive design that is perfect for the contemporary workplace. With the industries highest surge protection at 1,060 Joules, this masterfully engineered UL approved power strip offers quality, performance, and security.

Product Name	48" Power Strip
Dimensions	48.25" W x 1.25" D x 1.63" H
SKU	1918-3-004-F

LAN STATION KEYBOARD TRAY

The LAN Station Keyboard Tray easily mounts under the work surface. Its added depth allows the keyboard to extend to a comfortable working position and is a great place to store the mouse when not in use.

- Easy to install
- 19" by 19" sliding tray
- Works with most standard keyboards
- Made in the USA
- Limited Lifetime Warranty



Product Name	LAN Station Keyboard Tray
Width	20.56"
Depth	17.87"
Height	5.07"
Warranty	Limited Lifetime Warranty
SKU	5200-3-200-00

LAN STATION LCD MONITOR MOUNT

Kendall Howard LAN Station LCD Monitor Mounts make it simple to mount LCD Monitors to any Kendall Howard Performance Series® or Performance Plus® Accessory Bar. They are designed to easily mount any VESA compliant monitor up to a 22" widescreen. The Kendall Howard LAN Station LCD Monitor Mount easily pivots from left to right, and allows the user to adjust the tilt up to 40 degrees up or down, depending on the size of the monitor.

- 360 degrees of swivel (portrait to landscape)
- Up to 40 degrees of tilt (varies depending on monitor size)
- 75mm and 100mm VESA compliant mounting pattern
- 40 lb. maximum load or LCDs up to 22"
- Made in the USA
- Limited Lifetime Warranty



Product Name	LAN Station LCD Monitor Mount
Width	4.5"
Depth	4"
Height	5.75"
SKU	5200-3-510-00

LAN STATION RACKING SYSTEM

The Kendall Howard LAN Station Racking System easily installs under a work surface, and makes it easy to install rackmount components next to tower servers and computers. When the Kendall Howard LAN Station Racking System is installed, it turns any work station into a fully functional open frame rack.

- 13U
- Installs in minutes
- 24" fixed mounting depth
- 400 lb. weight capacity
- Made in the USA
- Limited Lifetime Warranty



Product Name	LAN Station Racking System
Width	19"
Depth	24"
Height	25.71"
Warranty	Limited Lifetime Warranty
SKU	5200-3-600-13

LAN STATION CASTER KITS

No hardware or tools required! These heavy duty bearing driven casters have threaded shafts that replace the levelers and make installation easy. With a maximum load of 1,000 lbs., add the LAN Station Caster Kit and make any LAN Station/Workbench or 4-Post Open Frame Rack mobile.

- Four or six heavy duty bearing-driven casters
- All casters are locking
- Non-marking wheels
- Tool-less installation
- Made in the USA
- Limited Lifetime Warranty



Product Name	LAN Station Caster Kit 4 Pack	LAN Station Corner Caster Kit 6 Pack
Width	3"	3"
Depth	4.5"	4.5"
Height	5.5"	5.5"
SKU	5200-3-001-00	5200-3-002-00

PERFORMANCE PLUS® LAN STATIONS/WORKBENCHES

ACCESSORIES

See pages 72-73 for these and other accessories.



Versatile add on utility drawer. Mounts in just minutes.



Add locking swivel casters to make your workbench mobile.



Monitor mount swivels 360 degrees and tilts up to 40 degrees.



Keyboard tray

PERFORMANCE PLUS® LAN STATIONS



Kendall Howard Performance Plus® LAN Stations/Workbenches are a completely modular and customizable solution without the custom lead time and price tag. The robust design can support up to 850 lbs. per shelf, making Performance Plus® the superior, heavy duty LAN Station/Workbench solution! We offer two depths (24", 30") four widths (36", 48", 60", 72"), and a corner LAN Station allowing you to configure exactly what you are looking for.

The modular design allows you to easily configure a LAN Station/Workbench solution to suit your specific room. By pairing our side frame kits with our selection of shelving kits, you can truly customize each bench.

Kendall Howard Performance Plus® LAN Stations/Workbenches are top of the line in quality and versatility. The systems are completely modular allowing you to design virtually any layout suitable for your environment.

Add-ons allow you to make your LAN Station/Workbench customized to your exact needs. Call and configure yours today.

The Kendall Howard Performance Plus® LAN Stations/Workbenches ship in completely enclosed boxes, but can be sent in bulk shipping upon customer request.

Performance Plus® Shelf Kits

The high quality laminate shelving kits are available in a variety of depths and widths and are completely height adjustable. Each shelf kit comes with everything you will need to mount the shelf at any height within the frame.

Performance Plus® Side Frame Kits

The heavy gauge tube steel side frame kits can be configured and installed in a few different ways. If you are looking for each LAN Station/Workbench to be mobile and easy to move around, simply purchase two side frame kits for each bench. But if you are putting together a large configuration and want all of the benches ganged together, use only one side frame kit in between each bench.

TWO WAYS TO ORDER!

OPTION 1: CONFIGURE YOUR OWN

The Performance Plus® Series LAN Stations/Workbenches allow you to custom configure a solution to meet your specific requirements.

To configure your own Performance Plus® LAN Station/Workbench:

- 1 - Determine how many LAN Stations/Workbenches you will need and what sizes.
- 2 - Next choose your Shelf Kits:
You must have at least two shelf kits per bench.

Description	36" Wide Shelf Kit	48" Wide Shelf Kit	60" Wide Shelf Kit	72" Wide Shelf Kit	Corner Shelf Kit
24" Depth	7000-3-036-24	7000-3-048-24	7000-3-060-24	7000-3-072-24	7000-3-0CR-24
30" Depth	7000-3-036-30	7000-3-048-30	7000-3-060-30	7000-3-072-30	7000-3-0CR-30

- 3 - Choose your Side Frame Kits:
Each bench will require two side frame kits unless you are ganging them together.
Each corner unit will require a corner frame kit as well.

Description	SKU
Side Frame Kit	7000-3-001-00
Corner Frame Kit	7000-3-002-00

- 4 - Don't forget to accessorize. See all Performance Plus® accessories on pages 72-73.



Call, email or visit us online to have a product specialist help you configure your Performance Plus® solution.

OPTION 2: PRE-CONFIGURED

Each configuration includes side frame kits, one 30" D shelf, and three 24" D shelves.
*Corner configuration includes three shelves all of the same depth.



Size	Product Name	Dimensions	SKU
36"	36" Performance Plus® LAN Station/Workbench	36" W x 30" D x 85.5" H	7100-1-100-36
48"	48" Performance Plus® LAN Station/Workbench	48" W x 30" D x 85.5" H	7100-1-100-48
60"	60" Performance Plus® LAN Station/Workbench	60" W x 30" D x 85.5" H	7100-1-100-60
72"	72" Performance Plus® LAN Station/Workbench	72" W x 30" D x 85.5" H	7100-1-100-72
Corner	Corner Performance Plus® LAN Station/Workbench	48" W x 48" D x 85.5" H	7100-1-100-CR

DEPLOYMENT SERVICES

One Box, One Shipment

ONE ready-to-go system!

Deploying technology systems to multi-site clients such as fast food chains or retail stores? At Kendall Howard we have the knowledge, resources, and experiences to effectively and successfully manage your deployments! *We can pre-populate cable managers, rack shelves, fans, and even other manufacturers' network equipment into the rack or cabinet of your choice.* This not only reduces the amount of in-the-field labor time and costs, but also ensures consistency from one location to the next. Whether you have 50 locations or 50,000, Kendall Howard can help you save time, money and resources!

Call us or visit our website to learn more!



SAVE TIME!



SAVE MONEY!



SAVE RESOURCES!





Don't settle for "GOOD ENOUGH"!

Did you know that we are the number one choice for many of our customers when it comes to custom manufacturing? Well we are! Do you know why? It all comes back to our philosophy of

**THE ANSWER IS YES.
NOW, WHAT'S THE QUESTION?**

Often customers cannot find what they're looking for and instead settle for something that just meets some of their needs. At Kendall Howard we make it our mission to get you exactly what you need, when you need it, and for how much you want to spend.



CONCEPT

Collaborate with our team of engineers to develop your custom solution!



DESIGN

See your designs come to life in as little as 2-3 days!



PRODUCTION

Production can be completed in as little as 2-3 weeks, not months!

INDEX

Part Number	Product Name	Page Number	Part Number	Product Name	Page Number
0004-1-002-01	Universal Wire Minder	42	1903-1-102-00	5" D Flanged Lacing Bar	36
0013-2-004-00	Portable Rack Caster Kit	26	1903-1-110-00	Flanged Lacing Bar - 10 pack	36
0014-2-004-00	Portable Rack Locking Caster Kit	26	1903-1-111-00	3" D Flanged Lacing Bar - 10 pack	36
0100-1-001-01	10-32 Rack Screws - 50 Pack	56	1903-1-112-00	5" D Flanged Lacing Bar - 10 pack	36
0100-1-001-02	M5 Rack Screws - 50 Pack	56	1903-1-200-01	1U Cable Lacing Shelf	37
0100-1-001-03	12-24 Rack Screws - 50 Pack	56	1903-3-000-01	1U Managed Cable Minder	39
0100-1-001-04	M6 Rack Screws - 50 Pack	56	1903-3-100-01	1U Tool-less 5 D-Ring Cable Manager	40
0100-1-002-01	10-32 Rack Screws - 100 Pack	56	1903-3-100-02	2U Tool-less 5 D-Ring Cable Manager	40
0100-1-002-02	M5 Rack Screws - 100 Pack	56	1903-3-300-01	1U Finger Duct Cable Manager	41
0100-1-002-03	12-24 Rack Screws - 100 Pack	56	1903-3-300-02	2U Finger Duct Cable Manager	41
0100-1-002-04	M6 Rack Screws - 100 Pack	56	1903-3-400-01	1U Slotted Routing Cable Manager	41
0100-1-011-01	10-32 Rack Screws W/Washers - 50 Pack	56	1903-3-400-02	2U Slotted Routing Cable Manager	41
0100-1-011-02	M5 Rack Screws W/Washers - 50 Pack	56	1904-1-001-01	20" Fixed Rack Shelf	49
0100-1-011-03	12-24 Rack Screws W/Washers - 50 Pack	56	1906-1-001-01	1U 12" Component Shelf	44
0100-1-011-04	M6 Rack Screws W/Washers - 50 Pack	56	1906-1-002-02	2U 14" Component Shelf	44
0100-1-012-01	10-32 Rack Screws W/Washers - 100 Pack	56	1906-1-003-03	3U 16" Component Shelf	44
0100-1-012-02	M5 Rack Screws W/Washers - 100 Pack	56	1906-1-010-02	2U 14" Vented Eco Shelf	45
0100-1-012-03	12-24 Rack Screws W/Washers - 100 Pack	56	1906-1-011-01	1U 5" Component Shelf	44
0100-1-012-04	M6 Rack Screws W/Washers - 100 Pack	56	1906-1-201-01	1U 12" Vented Component Shelf	44
0100-3-100-01	10-32 Rack Screws Bulk Pack - 5000 Pack	56	1906-3-006-02	2U 4-Point Adjustable Shelf	48
0100-3-100-02	M5 Rack Screws Bulk Pack - 5000 Pack	56	1906-3-007-01	1U 4-Point Adjustable Shelf	48
0100-3-100-03	12-24 Rack Screws Bulk Pack - 5000 Pack	56	1906-3-008-01	1U Vented 4-Point Adjustable Shelf	48
0100-3-100-04	M6 Rack Screws Bulk Pack - 5000 Pack	56	1906-3-201-01	1U 12" Component Shelf - 2 pack	44
0100-3-200-01	10-32 Rack Screws Bulk Pack - 2500 Pack	56	1906-3-202-02	2U 14" Component Shelf - 2 Pack	44
0100-3-200-02	M5 Rack Screws Bulk Pack - 2500 Pack	56	1906-3-203-03	3U 16" Component Shelf - 2 Pack	44
0100-3-200-03	12-24 Rack Screws Bulk Pack - 2500 Pack	56	1906-3-221-01	1U 12" Vented Component Shelf - 2 Pack	44
0100-3-200-04	M6 Rack Screws Bulk Pack - 2500 Pack	56	1906-3-222-02	2U 14" Vented Eco Shelf - 2 Pack	45
0100-3-300-01	10-32 Rack w/Washers Bulk Pack - 2500 Pack	56	1906-3-300-02	2U 2-Piece Telco Rack Shelf	47
0100-3-300-02	M5 Rack w/Washers Bulk Pack - 2500 Pack	56	1907-3-000-03	3U Vented Centerline Shelf	46
0100-3-300-03	12-24 Rack w/Washers Bulk Pack - 2500 Pack	56	1907-3-001-03	3U Centerline Shelf	46
0100-3-300-04	M6 Rack w/Washers Bulk Pack - 2500 Pack	56	1908-3-001-01	Fan Assembly Kit	53
0200-1-001-01	10-32 Cage Nuts - 50 Pack	57	1908-3-001-02	3U Triple Fan Panel	53
0200-1-001-02	M5 Cage Nuts - 50 Pack	57	1908-4-001-01	High Speed Fan Assembly Kit	53
0200-1-001-03	12-24 Cage Nuts - 50 Pack	57	1910-1-001-01	1U Stationary Keyboard Tray	51
0200-1-001-04	M6 Cage Nuts - 50 Pack	57	1910-3-002-01	1U Rackmount 2-Post Keyboard Tray	50
0200-1-002-01	10-32 Cage Nuts - 100 Pack	57	1910-3-003-01	1U Rackmount 4-Post Keyboard Tray	50
0200-1-002-02	M5 Cage Nuts - 100 Pack	57	1910-3-004-01	Rackmount Keyboard Tray Extension Kit	50
0200-1-002-03	12-24 Cage Nuts - 100 Pack	57	1911-3-000-41	41U 2-Post Cable Cove Rack	24
0200-1-002-04	M6 Cage Nuts - 100 Pack	57	1911-3-100-25	25U 2-Post ECO Rack	22
0200-1-003-01	10-32 Cage Nuts Bulk Pack - 2500 Pack	57	1911-3-100-45	45U 2-Post ECO Rack	22
0200-1-003-02	M5 Cage Nuts Bulk Pack - 2500 Pack	57	1915-1-300-00	Wall Mount SFF CPU Bracket	18
0200-1-003-03	12-24 Cage Nuts Bulk Pack - 2500 Pack	57	1915-1-400-00	Wall Mount Desktop CPU Bracket	18
0200-1-003-04	M6 Cage Nuts Bulk Pack - 2500 Pack	57	1915-1-500-00	Adjustable CPU Holder	19
0300-1-001-00	Wall Mount Hardware Kit	58	1915-3-001-08	8U Wall Mount Rack	6
0300-1-002-00	Hook and Loop Cable Ties - 10 Pack	58	1915-3-001-12	12U Wall Mount Rack	6
1901-1-000-01	1U D-Ring Cable Management Kit	39	1915-3-100-08	8U Security Wall Mount Cabinet	12
1901-1-001-01	1U Flanged Spacer Blank	43	1915-3-200-12	12U Side Load Wall Mount Rack	8
1901-1-002-02	2U Flanged Spacer Blank	43	1915-3-300-12	12U V-Line Wall Mount Rack - 12" Depth	7
1901-1-003-03	3U Flanged Spacer Blank	43	1915-3-300-16	16U V-Line Wall Mount Rack - 12" Depth	7
1901-1-004-04	4U Flanged Spacer Blank	43	1915-3-300-21	21U V-Line Wall Mount Rack - 12" Depth	7
1901-1-006-06	6U Flanged Spacer Blank	43	1915-3-301-12	12U V-Line Wall Mount Rack - 18" Depth	7
1901-1-101-01	1U Flat Spacer Blank	43	1915-3-301-16	16U V-Line Wall Mount Rack - 18" Depth	7
1901-1-101-02	2U Flat Spacer Blank	43	1915-3-301-21	21U V-Line Wall Mount Rack - 18" Depth	7
1901-1-101-03	3U Flat Spacer Blank	43	1915-3-400-04	4U Pivot Frame Wall Mount Rack	11
1901-1-101-04	4U Flat Spacer Blank	43	1915-3-400-08	8U Pivot Frame Wall Mount Rack	11
1901-1-101-06	6U Flat Spacer Blank	43	1915-3-401-00	Pivot Frame Wall Mount Rack Cover	11
1902-1-001-01	1U Cable Routing Blank	38	1915-3-402-00	Pivot Frame Stationary Rack Mount Brackets	11
1902-1-002-02	2U Cable Routing Blank	38	1915-3-700-12	12U Corner Wall Mount Cabinet	13
1903-1-001-01	1U Flat Cable Lacing Panel	38	1915-3-800-12	12U Phantom Class Open Frame Swing-Out Rack	10
1903-1-002-02	2U Flat Cable Lacing Panel	38	1915-3-800-18	18U Phantom Class Open Frame Swing-Out Rack	10
1903-1-011-01	1U Flat Cable Lacing Panel - 10 pack	38	1916-2-100-2	2U V-Rack	9
1903-1-012-02	2U Flat Cable Lacing Panel - 10 pack	38	1916-2-100-3	3U V-Rack	9
1903-1-100-00	Flanged Lacing Bar	36	1916-2-100-4	4U V-Rack	9
1903-1-101-00	3" D Flanged Lacing Bar	36	1916-3-200-01	1U Patch Panel Bracket	9

Part Number	Product Name	Page Number	Part Number	Product Name	Page Number
1916-3-200-02	2U Patch Panel Bracket	9	3104-3-001-42	42U LINIER Server Cabinet - Solid/Convex Doors - 36" Depth	32-33
1916-3-200-04	4U Patch Panel Bracket	9	3104-3-024-22	22U LINIER Server Cabinet - Solid/Convex Doors - 24" Depth	30-31
1916-3-200-06	6U Patch Panel Bracket	9	3104-3-024-27	27U LINIER Server Cabinet - Solid/Convex Doors - 24" Depth	30-31
1917-3-001-00	DVR Security Lock Box - 21" Depth	64	3104-3-024-37	37U LINIER Server Cabinet - Solid/Convex Doors - 24" Depth	30-31
1917-3-002-00	DVR Wall Mount Bracket Kit	64	3104-3-024-42	42U LINIER Server Cabinet - Solid/Convex Doors - 24" Depth	30-31
1917-3-003-00	DVR Security Lock Box - 15" Depth	64	3105-3-001-22	22U LINIER Server Cabinet - Convex/Convex Doors - 36" Depth	32-33
1918-3-004-F	48" Power Strip	72	3105-3-001-27	27U LINIER Server Cabinet - Convex/Convex Doors - 36" Depth	32-33
1920-3-000-08	8U Portable Rack	26	3105-3-001-37	37U LINIER Server Cabinet - Convex/Convex Doors - 36" Depth	32-33
1920-3-000-12	12U Portable Rack	26	3105-3-001-42	42U LINIER Server Cabinet - Convex/Convex Doors - 36" Depth	32-33
1920-3-000-20	20U Portable Rack	26	3105-3-024-22	22U LINIER Server Cabinet - Convex/Convex Doors - 24" Depth	30-31
1921-1-000-00	Portable Rack Stacking Bracket Kit	26	3105-3-024-27	27U LINIER Server Cabinet - Convex/Convex Doors - 24" Depth	30-31
1922-3-100-02	2U Rack Mountable Drawer	52	3105-3-024-37	37U LINIER Server Cabinet - Convex/Convex Doors - 24" Depth	30-31
1922-3-100-03	3U Rack Mountable Drawer	52	3105-3-024-42	42U LINIER Server Cabinet - Convex/Convex Doors - 24" Depth	30-31
1922-3-100-04	4U Rack Mountable Drawer	52	3106-3-001-22	22U LINIER Server Cabinet - Solid/Vented Doors - 36" Depth	32-33
1922-3-300-01	1U 20" Rack Mountable Sliding Shelf	49	3106-3-001-27	27U LINIER Server Cabinet - Solid/Vented Doors - 36" Depth	32-33
1922-3-400-01	1U 20" Vented Rack Mountable Sliding Shelf	49	3106-3-001-37	37U LINIER Server Cabinet - Solid/Vented Doors - 36" Depth	32-33
1924-1-001-02	2U Rack Helper	59	3106-3-001-42	42U LINIER Server Cabinet - Solid/Vented Doors - 36" Depth	32-33
1927-3-002-00	2-Piece Rack Conversion Kit	23	3106-3-024-22	22U LINIER Server Cabinet - Solid/Vented Doors - 24" Depth	30-31
1927-3-004-00	4-Piece Rack Conversion Kit	23	3106-3-024-27	27U LINIER Server Cabinet - Solid/Vented Doors - 24" Depth	30-31
1932-3-001-08	8U Compact SOHO Server Cabinet	27	3106-3-024-37	37U LINIER Server Cabinet - Solid/Vented Doors - 24" Depth	30-31
1932-3-001-12	12U Compact SOHO Server Cabinet	27	3106-3-024-42	42U LINIER Server Cabinet - Vented/Vented Doors - 24" Depth	30-31
1932-3-201-08	8U Compact SOHO Server Cabinet - No Doors	27	3107-3-001-22	22U LINIER Server Cabinet - Vented/Vented Doors - 36" Depth	32-33
1932-3-201-12	12U Compact SOHO Server Cabinet - No Doors	27	3107-3-001-27	27U LINIER Server Cabinet - Vented/Vented Doors - 36" Depth	32-33
1940-3-001-41	41U Knockdown 4-Post Open Frame Rack	25	3107-3-001-37	37U LINIER Server Cabinet - Vented/Vented Doors - 36" Depth	32-33
2000-3-001-01	POS Payment Device Stand	65	3107-3-001-42	42U LINIER Server Cabinet - Vented/Vented Doors - 36" Depth	32-33
3000-1-002-02	2U 12" Economy Rack Shelf	45	3107-3-024-22	22U LINIER Server Cabinet - Vented/Vented Doors - 24" Depth	30-31
3000-1-003-02	2U 14.75" Economy Rack Shelf	45	3107-3-024-27	27U LINIER Server Cabinet - Vented/Vented Doors - 24" Depth	30-31
3000-1-102-02	2U 12" Vented Economy Rack Shelf	45	3107-3-024-37	37U LINIER Server Cabinet - Vented/Vented Doors - 24" Depth	30-31
3000-1-103-02	2U 14.75" Vented Economy Rack Shelf	45	3107-3-024-42	42U LINIER Server Cabinet - Vented/Vented Doors - 24" Depth	30-31
3100-3-001-22	22U LINIER Server Cabinet - Glass/Vented Doors - 36" Depth	32-33	3108-3-001-22	22U LINIER Server Cabinet - Solid/Solid Doors - 36" Depth	32-33
3100-3-001-27	27U LINIER Server Cabinet - Glass/Vented Doors - 36" Depth	32-33	3108-3-001-27	27U LINIER Server Cabinet - Solid/Solid Doors - 36" Depth	32-33
3100-3-001-37	37U LINIER Server Cabinet - Glass/Vented Doors - 36" Depth	32-33	3108-3-001-37	37U LINIER Server Cabinet - Solid/Solid Doors - 36" Depth	32-33
3100-3-001-42	42U LINIER Server Cabinet - Glass/Vented Doors - 36" Depth	32-33	3108-3-001-42	42U LINIER Server Cabinet - Solid/Solid Doors - 36" Depth	32-33
3100-3-024-22	22U LINIER Server Cabinet - Glass/Vented Doors - 24" Depth	30-31	3108-3-024-22	22U LINIER Server Cabinet - Solid/Solid Doors - 24" Depth	30-31
3100-3-024-27	27U LINIER Server Cabinet - Glass/Vented Doors - 24" Depth	30-31	3108-3-024-27	27U LINIER Server Cabinet - Solid/Solid Doors - 24" Depth	30-31
3100-3-024-37	37U LINIER Server Cabinet - Glass/Vented Doors - 24" Depth	30-31	3108-3-024-37	37U LINIER Server Cabinet - Solid/Solid Doors - 24" Depth	30-31
3100-3-024-42	42U LINIER Server Cabinet - Glass/Vented Doors - 24" Depth	30-31	3108-3-024-42	42U LINIER Server Cabinet - Solid/Solid Doors - 24" Depth	30-31
3101-3-001-22	22U LINIER Server Cabinet - Glass/Solid Doors - 36" Depth	32-33	3110-3-001-22	22U LINIER Server Cabinet - Convex/Vented Doors - 36" Depth	32-33
3101-3-001-27	27U LINIER Server Cabinet - Glass/Solid Doors - 36" Depth	32-33	3110-3-001-27	27U LINIER Server Cabinet - Convex/Vented Doors - 36" Depth	32-33
3101-3-001-37	37U LINIER Server Cabinet - Glass/Solid Doors - 36" Depth	32-33	3110-3-001-37	37U LINIER Server Cabinet - Convex/Vented Doors - 36" Depth	32-33
3101-3-001-42	42U LINIER Server Cabinet - Glass/Solid Doors - 36" Depth	32-33	3110-3-001-42	42U LINIER Server Cabinet - Convex/Vented Doors - 36" Depth	32-33
3101-3-024-22	22U LINIER Server Cabinet - Glass/Solid Doors - 24" Depth	30-31	3110-3-024-22	22U LINIER Server Cabinet - Convex/Vented Doors - 24" Depth	30-31
3101-3-024-27	27U LINIER Server Cabinet - Glass/Solid Doors - 24" Depth	30-31	3110-3-024-27	27U LINIER Server Cabinet - Convex/Vented Doors - 24" Depth	30-31
3101-3-024-37	37U LINIER Server Cabinet - Glass/Solid Doors - 24" Depth	30-31	3110-3-024-37	37U LINIER Server Cabinet - Convex/Vented Doors - 24" Depth	30-31
3101-3-024-42	42U LINIER Server Cabinet - Glass/Solid Doors - 24" Depth	30-31	3110-3-024-42	42U LINIER Server Cabinet - Convex/Vented Doors - 24" Depth	30-31
3102-3-001-22	22U LINIER Server Cabinet - Convex/Glass Doors - 36" Depth	32-33	3130-3-001-06	6U LINIER Swing-Out Wall Mount Cabinet - Glass Door	16-17
3102-3-001-27	27U LINIER Server Cabinet - Convex/Glass Doors - 36" Depth	32-33	3130-3-001-09	9U LINIER Swing-Out Wall Mount Cabinet - Glass Door	16-17
3102-3-001-37	37U LINIER Server Cabinet - Convex/Glass Doors - 36" Depth	32-33	3130-3-001-12	12U LINIER Swing-Out Wall Mount Cabinet - Glass Door	16-17
3102-3-001-42	42U LINIER Server Cabinet - Convex/Glass Doors - 36" Depth	32-33	3130-3-001-15	15U LINIER Swing-Out Wall Mount Cabinet - Glass Door	16-17
3102-3-024-22	22U LINIER Server Cabinet - Convex/Glass Doors - 24" Depth	30-31	3130-3-001-18	18U LINIER Swing-Out Wall Mount Cabinet - Glass Door	16-17
3102-3-024-27	27U LINIER Server Cabinet - Convex/Glass Doors - 24" Depth	30-31	3130-3-001-22	22U LINIER Swing-Out Wall Mount Cabinet - Glass Door	16-17
3102-3-024-37	37U LINIER Server Cabinet - Convex/Glass Doors - 24" Depth	30-31	3131-3-001-06	6U LINIER Swing-Out Wall Mount Cabinet - Solid Door	16-17
3102-3-024-42	42U LINIER Server Cabinet - Convex/Glass Doors - 24" Depth	30-31	3131-3-001-09	9U LINIER Swing-Out Wall Mount Cabinet - Solid Door	16-17
3103-3-001-22	22U LINIER Server Cabinet - Glass/Glass Doors - 36" Depth	32-33	3131-3-001-12	12U LINIER Swing-Out Wall Mount Cabinet - Solid Door	16-17
3103-3-001-27	27U LINIER Server Cabinet - Glass/Glass Doors - 36" Depth	32-33	3131-3-001-15	15U LINIER Swing-Out Wall Mount Cabinet - Solid Door	16-17
3103-3-001-37	37U LINIER Server Cabinet - Glass/Glass Doors - 36" Depth	32-33	3131-3-001-18	18U LINIER Swing-Out Wall Mount Cabinet - Solid Door	16-17
3103-3-001-42	42U LINIER Server Cabinet - Glass/Glass Doors - 36" Depth	32-33	3131-3-001-22	22U LINIER Swing-Out Wall Mount Cabinet - Solid Door	16-17
3103-3-024-22	22U LINIER Server Cabinet - Glass/Glass Doors - 24" Depth	30-31	3132-3-001-06	6U LINIER Swing-Out Wall Mount Cabinet - Vented Door	16-17
3103-3-024-27	27U LINIER Server Cabinet - Glass/Glass Doors - 24" Depth	30-31	3132-3-001-09	9U LINIER Swing-Out Wall Mount Cabinet - Vented Door	16-17
3103-3-024-37	37U LINIER Server Cabinet - Glass/Glass Doors - 24" Depth	30-31	3132-3-001-12	12U LINIER Swing-Out Wall Mount Cabinet - Vented Door	16-17
3103-3-024-42	42U LINIER Server Cabinet - Glass/Glass Doors - 24" Depth	30-31	3132-3-001-15	15U LINIER Swing-Out Wall Mount Cabinet - Vented Door	16-17
3104-3-001-22	22U LINIER Server Cabinet - Solid/Convex Doors - 36" Depth	32-33	3132-3-001-18	18U LINIER Swing-Out Wall Mount Cabinet - Vented Door	16-17
3104-3-001-27	27U LINIER Server Cabinet - Solid/Convex Doors - 36" Depth	32-33	3132-3-001-22	22U LINIER Swing-Out Wall Mount Cabinet - Vented Door	16-17
3104-3-001-37	37U LINIER Server Cabinet - Solid/Convex Doors - 36" Depth	32-33	3140-3-001-01	LINIER Caster Base	55

80

INDEX

Part Number	Product Name	Page Number	Part Number	Product Name	Page Number
5000-3-402-24	24" Performance 400 Series LAN Station - Caramel Apple	70-71	5500-3-004-26	72" W x 24" D Training Table - African Mahogany	68-69
5000-3-402-48	48" Performance 400 Series LAN Station - Caramel Apple	70-71	5500-3-004-33	36" W x 30" D Training Table - African Mahogany	68-69
5000-3-402-72	72" Performance 400 Series LAN Station - Caramel Apple	70-71	5500-3-004-34	48" W x 30" D Training Table - African Mahogany	68-69
5000-3-402-96	96" Performance 400 Series LAN Station - Caramel Apple	70-71	5500-3-004-35	60" W x 30" D Training Table - African Mahogany	68-69
5000-3-403-24	24" Performance 400 Series LAN Station - Serene Cherry	70-71	5500-3-004-36	72" W x 30" D Training Table - African Mahogany	68-69
5000-3-403-48	48" Performance 400 Series LAN Station - Serene Cherry	70-71	5500-3-100-00	Training Table Ganging Bracket Kit	68-69
5000-3-403-72	72" Performance 400 Series LAN Station - Serene Cherry	70-71	5500-3-100-01	Training Table Power/Data Conversion Kit	68-69
5000-3-403-96	96" Performance 400 Series LAN Station - Serene Cherry	70-71	5500-3-100-02	Training Table Keyboard Tray	68-69
5000-3-404-24	24" Performance 400 Series LAN Station - African Mahogany	70-71	5500-3-100-03	Training Table Locking Caster Kit	68-69
5000-3-404-48	48" Performance 400 Series LAN Station - African Mahogany	70-71	5500-3-100-04	Training Table SFF CPU Holder	68-69
5000-3-404-72	72" Performance 400 Series LAN Station - African Mahogany	70-71	5500-3-100-08	Training Table Standard CPU Holder	68-69
5000-3-404-96	96" Performance 400 Series LAN Station - African Mahogany	70-71	5500-3-100-36	36" Training Table Cable Management Enclosure	68-69
5200-3-001-00	LAN Station Caster Kit	72-73	5500-3-100-48	48" Training Table Cable Management Enclosure	68-69
5200-3-002-00	LAN Station Corner Caster Kit	72-73	5500-3-100-60	60" Training Table Cable Management Enclosure	68-69
5200-3-200-00	LAN Station Keyboard Tray	72-73	5500-3-100-72	72" Training Table Cable Management Enclosure	68-69
5200-3-201-00	LAN Station Utility Drawer - Folkstone	72-73	7000-3-536-00	36" Performance Plus Accessory Bar Kit	72-73
5200-3-202-00	LAN Station Utility Drawer - Hard Rock Maple	72-73	7000-3-548-00	48" Performance Plus Accessory Bar Kit	72-73
5200-3-203-00	LAN Station Utility Drawer - Caramel Apple	72-73	7000-3-560-00	60" Performance Plus Accessory Bar Kit	72-73
5200-3-204-00	LAN Station Utility Drawer - Serene Cherry	72-73	7000-3-572-00	72" Performance Plus Accessory Bar Kit	72-73
5200-3-205-00	LAN Station Utility Drawer - African Mahogany	72-73	7000-3-5CR-00	Corner Performance Plus Accessory Bar Kit	72-73
5200-3-300-00	Performance Rollout Cart	72-73	7100-1-100-36	36" Performance Plus Heavy Duty LAN Station	74-75
5200-3-500-24	Performance 24" Accessory Bar	72-73	7100-1-100-48	48" Performance Plus Heavy Duty LAN Station	74-75
5200-3-500-48	Performance 48" Accessory Bar	72-73	7100-1-100-60	60" Performance Plus Heavy Duty LAN Station	74-75
5200-3-500-72	Performance 72" Accessory Bar	72-73	7100-1-100-72	72" Performance Plus Heavy Duty LAN Station	74-75
5200-3-500-96	Performance 96" Accessory Bar	72-73	7100-1-100-CR	Corner Performance Plus Heavy Duty LAN Station	74-75
5200-3-500-CR	Performance Corner Accessory Bar	72-73	DS-100	PC/LCD Security Stand	62
5200-3-510-00	LAN Station LCD Monitor Mount	72-73	WMT-CM	Thin Client / LCD Wall Mount	63
5200-3-580-00	Performance Ganging Bracket Kit	72-73			
5200-3-600-13	LAN Station Racking System	72-73			
5500-3-000-23	36" W x 24" D Training Table - Folkstone	68-69			
5500-3-000-24	48" W x 24" D Training Table - Folkstone	68-69			
5500-3-000-25	60" W x 24" D Training Table - Folkstone	68-69			
5500-3-000-26	72" W x 24" D Training Table - Folkstone	68-69			
5500-3-000-33	36" W x 30" D Training Table - Folkstone	68-69			
5500-3-000-34	48" W x 30" D Training Table - Folkstone	68-69			
5500-3-000-35	60" W x 30" D Training Table - Folkstone	68-69			
5500-3-000-36	72" W x 30" D Training Table - Folkstone	68-69			
5500-3-001-23	36" W x 24" D Training Table - Hard Rock Maple	68-69			
5500-3-001-24	48" W x 24" D Training Table - Hard Rock Maple	68-69			
5500-3-001-25	60" W x 24" D Training Table - Hard Rock Maple	68-69			
5500-3-001-26	72" W x 24" D Training Table - Hard Rock Maple	68-69			
5500-3-001-33	36" W x 30" D Training Table - Hard Rock Maple	68-69			
5500-3-001-34	48" W x 30" D Training Table - Hard Rock Maple	68-69			
5500-3-001-35	60" W x 30" D Training Table - Hard Rock Maple	68-69			
5500-3-001-36	72" W x 30" D Training Table - Hard Rock Maple	68-69			
5500-3-002-23	36" W x 24" D Training Table - Caramel Apple	68-69			
5500-3-002-24	48" W x 24" D Training Table - Caramel Apple	68-69			
5500-3-002-25	60" W x 24" D Training Table - Caramel Apple	68-69			
5500-3-002-26	72" W x 24" D Training Table - Caramel Apple	68-69			
5500-3-002-33	36" W x 30" D Training Table - Caramel Apple	68-69			
5500-3-002-34	48" W x 30" D Training Table - Caramel Apple	68-69			
5500-3-002-35	60" W x 30" D Training Table - Caramel Apple	68-69			
5500-3-002-36	72" W x 30" D Training Table - Caramel Apple	68-69			
5500-3-003-23	36" W x 24" D Training Table - Serene Cherry	68-69			
5500-3-003-24	48" W x 24" D Training Table - Serene Cherry	68-69			
5500-3-003-25	60" W x 24" D Training Table - Serene Cherry	68-69			
5500-3-003-26	72" W x 24" D Training Table - Serene Cherry	68-69			
5500-3-003-33	36" W x 30" D Training Table - Serene Cherry	68-69			
5500-3-003-34	48" W x 30" D Training Table - Serene Cherry	68-69			
5500-3-003-35	60" W x 30" D Training Table - Serene Cherry	68-69			
5500-3-003-36	72" W x 30" D Training Table - Serene Cherry	68-69			
5500-3-004-23	36" W x 24" D Training Table - African Mahogany	68-69			
5500-3-004-24	48" W x 24" D Training Table - African Mahogany	68-69			
5500-3-004-25	60" W x 24" D Training Table - African Mahogany	68-69			



KENDALL HOWARD

www.kendallhoward.com

10152 Liberty Lane, Chisago City, MN 55013

Follow us on

